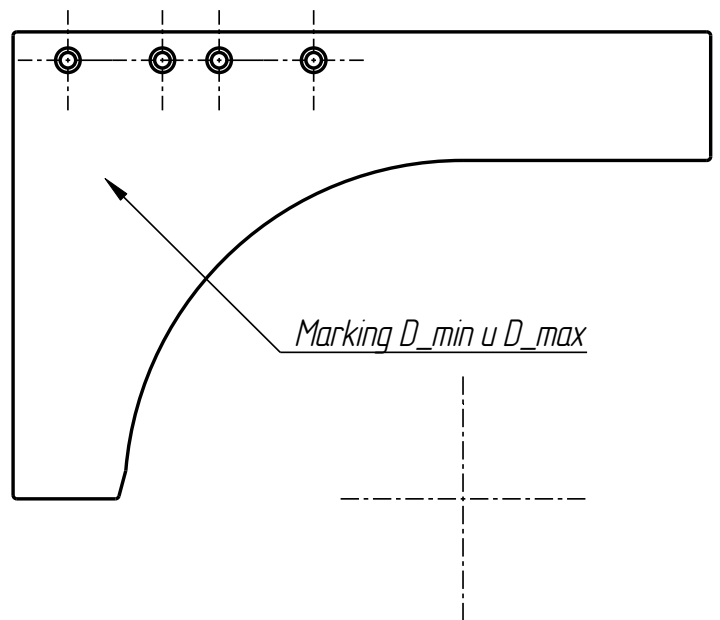
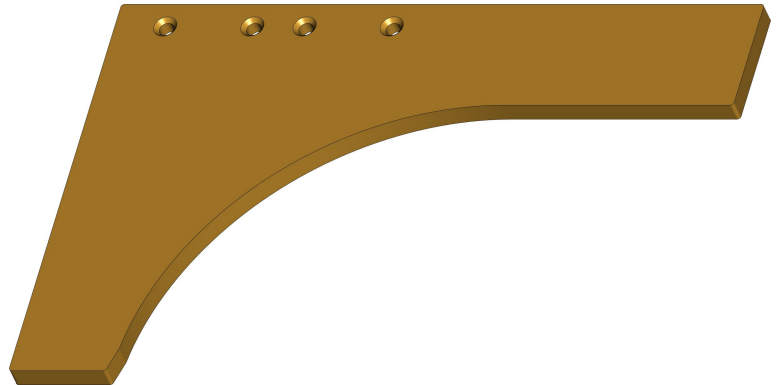


Top model: 10-401-26M0027		
	Parameter	
	D_MIN	D_MAX
Instance		
10-401-26M0027_45-47	45	47
10-401-26M0027_47-49	47	49
10-401-26M0027_49-51	49	51
10-401-26M0027_51-53	51	53
10-401-26M0027_53-55	53	55
10-401-26M0027_55-57	55	57
10-401-26M0027_57-59	57	59
10-401-26M0027_59-61	59	61
10-401-26M0027_61-63	61	63
10-401-26M0027_63-65	63	65
10-401-26M0027_65-67	65	67
10-401-26M0027_67-69	67	69
10-401-26M0027_69-71	69	71
10-401-26M0027_71-73	71	73
10-401-26M0027_73-75	73	75
10-401-26M0027_75-77	75	77
10-401-26M0027_77-79	77	79
10-401-26M0027_79-81	79	81
10-401-26M0027_81-83	81	83
10-401-26M0027_83-85	83	85
10-401-26M0027_85-87	85	87
10-401-26M0027_87-89	87	89
10-401-26M0027_89-91	89	91
10-401-26M0027_91-93	91	93
10-401-26M0027_93-95	93	95
10-401-26M0027_95-97	95	97
10-401-26M0027_97-99	97	99
10-401-26M0027_99-101	99	101
10-401-26M0027_101-103	101	103



10-401-26M0027