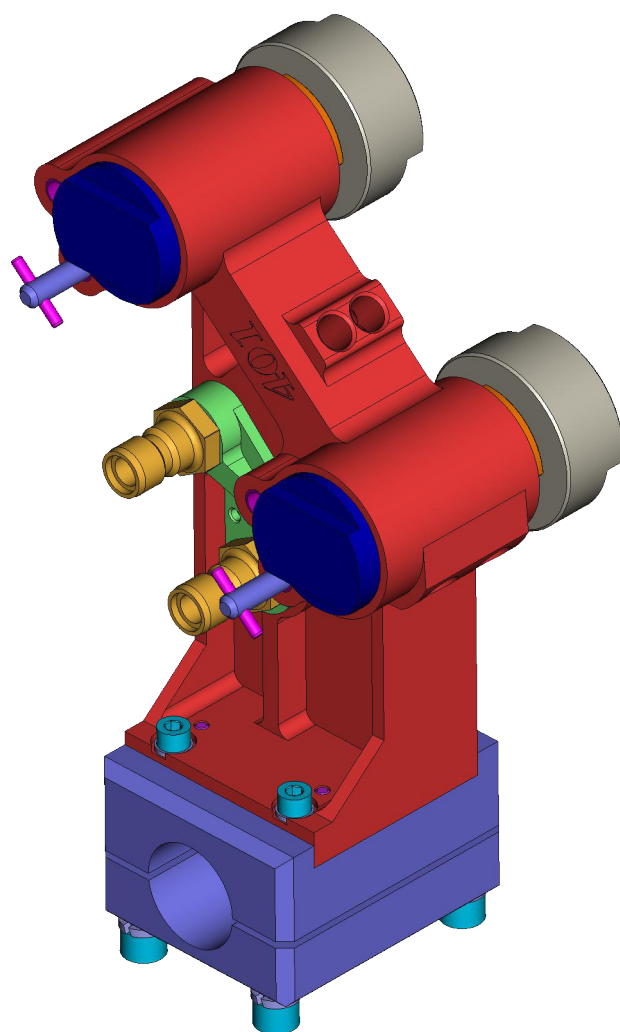
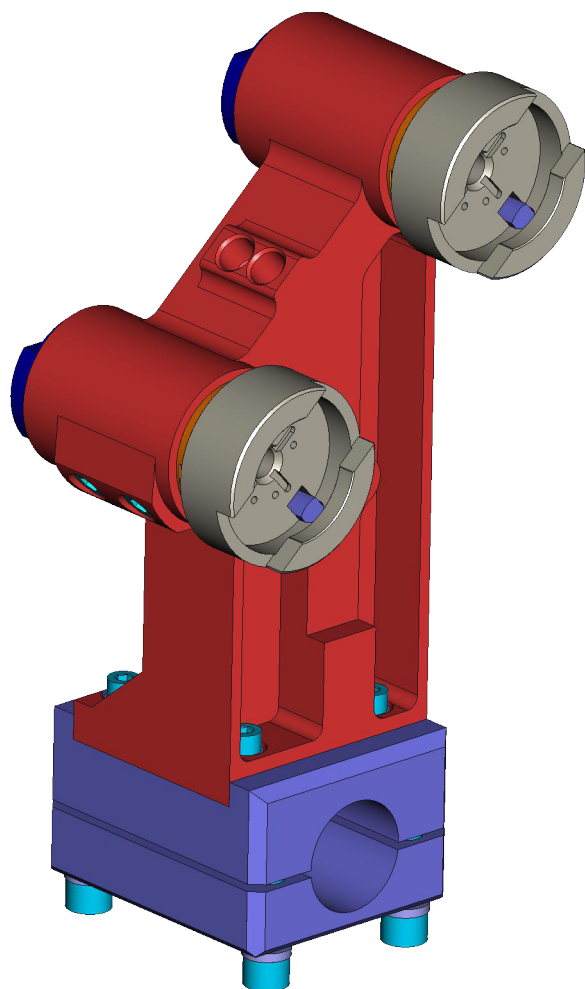


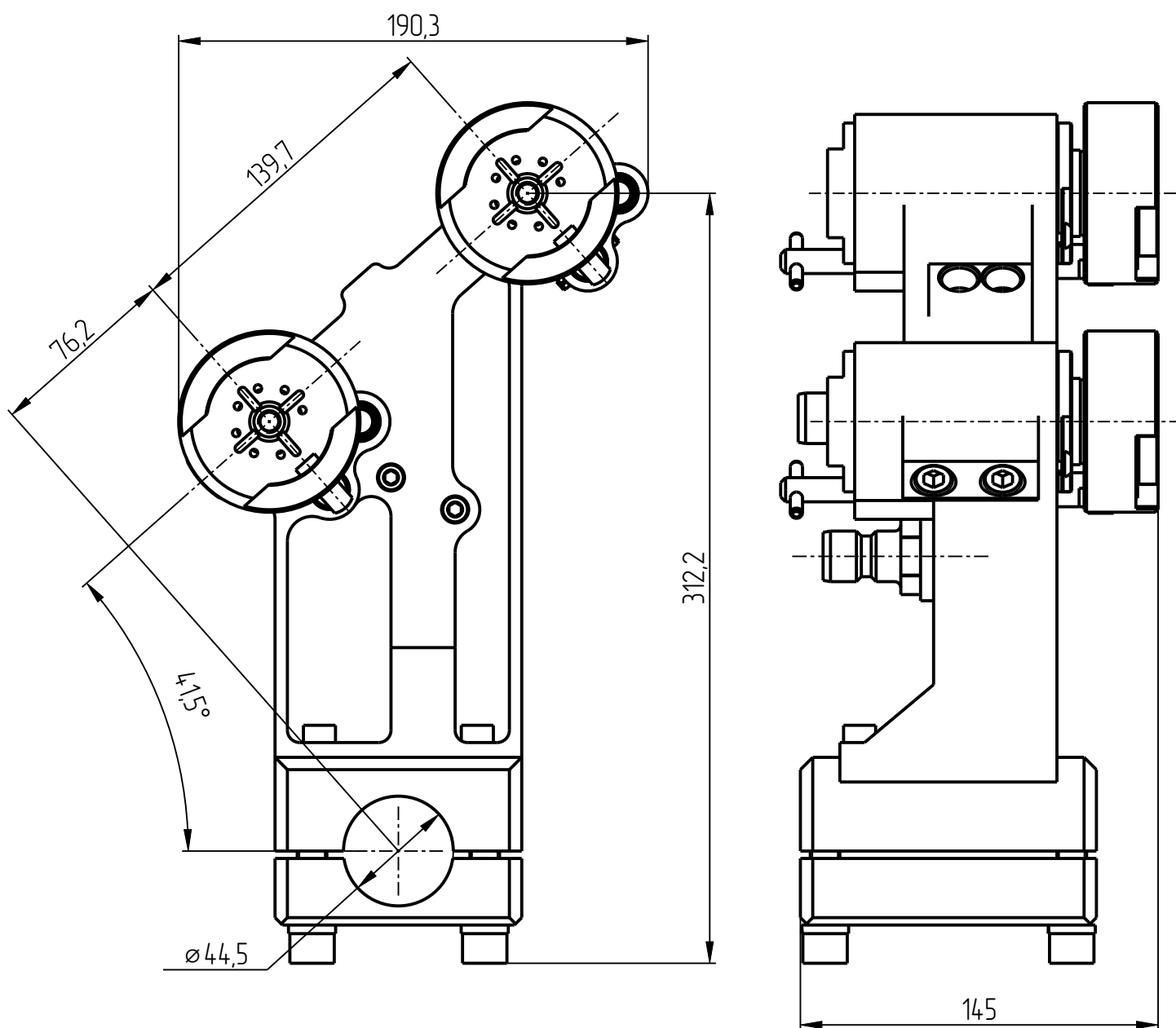
401

KDG-401-014
КРОНШТЕЙН ДУТЬЕВЫХ
ГОЛОВОК (5-1/2")
(МРН 401-139_7_ISP2)

Кронштейн KDG-401-014



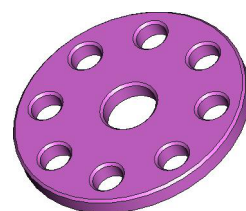
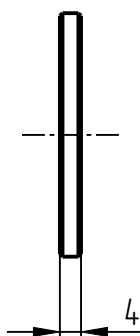
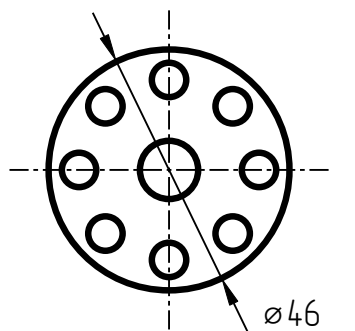
Кронштейн KDG-401-014



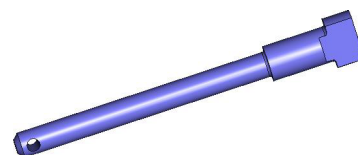
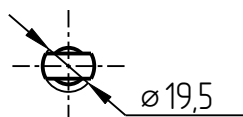
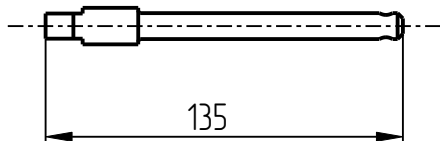
Кронштейн дутьевых головок KDG-401-014

Спецификация

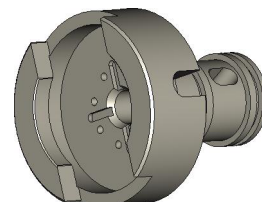
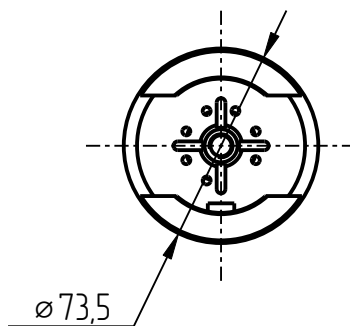
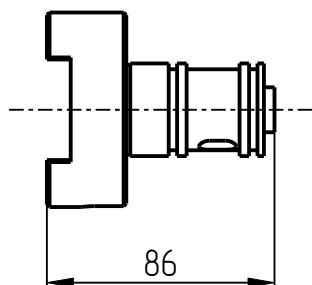
№ поз.	Шифр	Наименование	Кол-во
Детали			
1	KDG-D-U-46X4-401	Диск упорный	2
2	KDG-F	Фиксатор	2
3	KDG-G2-401	Гнездо	2
4	KDG-K-P-401	Поршневое кольцо	4
5	KDG-P-13x62-401	Пружина фиксатора	2
6	KDG-P-30X35-401	Пружина	2
7	KDG-SHT-G1_2-401	Штуцер соединительный	2
8	KDG-V1-401	Втулка гнезда	2
9	KDG-V2-401	Втулка малая	4
10	KDG-V3-401	Упорное кольцо	4
11	KDG-V4-401	Втулка большая	4
12	KDG-Z-2D-8N-401	Заглушка 2"- 8 ниток	2
13	kdg-dsh-01-401	Держатель штуцеров	1
14	KDG-401-001-001	Корпус	1
15	KDG-401-014-003-01	Держатель	1
16	KDG-401-014-003-02	Держатель	1
Стандартные изделия			
17	Винт М6х10 DIN 7380		4
18	Пробка коническая МК16х1,5 DIN 906		3
19	Шайба пружинная В8-А4 DIN 127		4
20	Винт DIN 912-UNC3/8"-16х3/4"		2
21	Штифт разрезной 5х30 DIN 1481		2
22	Штифт 6С3х25 DIN 6325		2
23	Шайба 12Т DIN 127		4
24	Кольцо 020-024-25-1-7 ГОСТ 18829-73		2
25	Шайба 10Л DIN 127		2
26	Винт М6х35 DIN 912		2
27	Винт М8х25 DIN 912		4
28	Винт М12х55 DIN 912		4



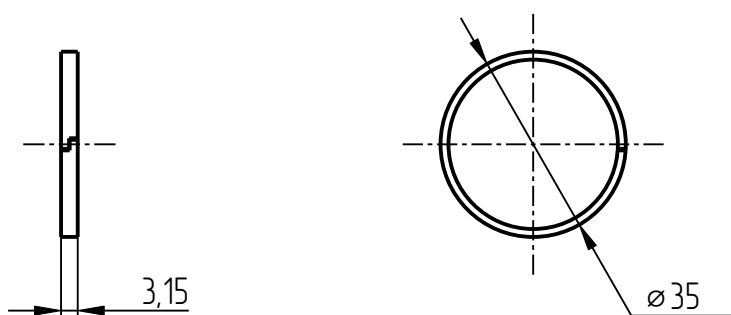
1. Диск упорный
KDG-D-U-46X4-401



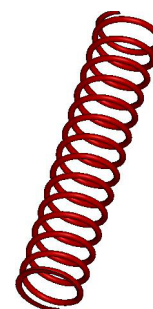
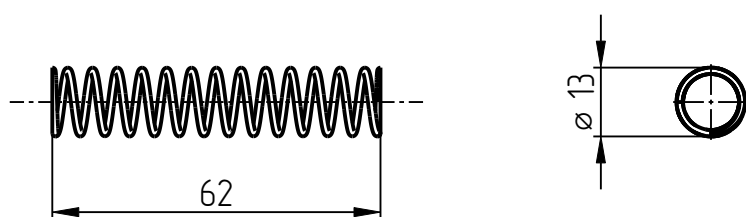
2. Фиксатор
KDG-F-401



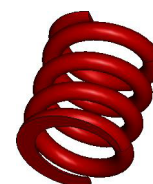
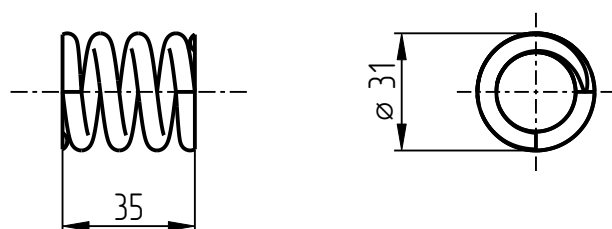
3. Гнездо
KDG-G2-401



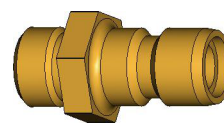
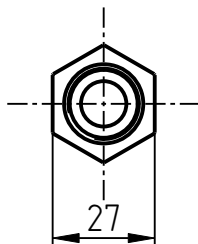
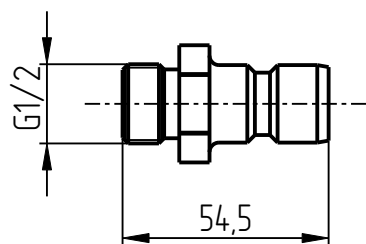
4. Поршневое кольцо
KDG-K-P-401



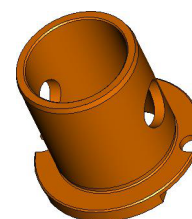
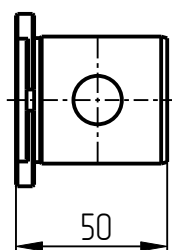
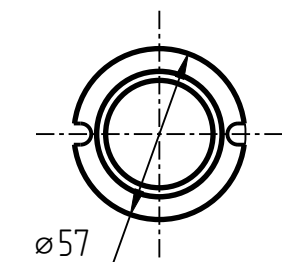
5. Пружина фиксатора
KDG-P-13x62-401



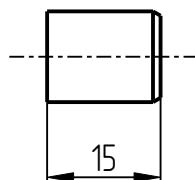
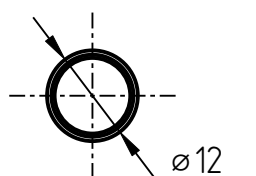
6. Пружина
KDG-P-30X35-401



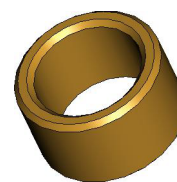
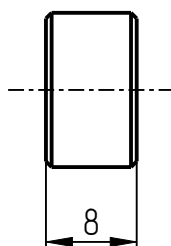
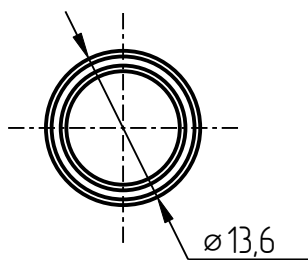
7. Штуцер соединительный
KDG-SHT-G1_2-401



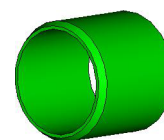
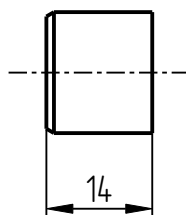
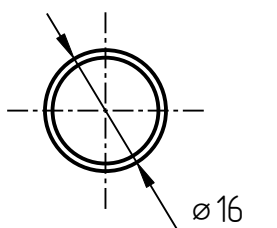
8. Втулка гнезда
KDG-V1-401



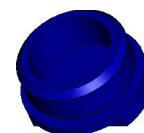
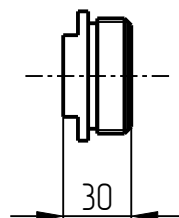
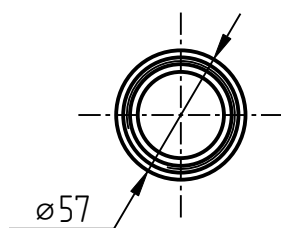
9. Втулка малая
KDG-V2-401



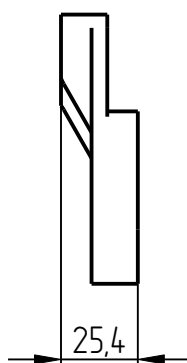
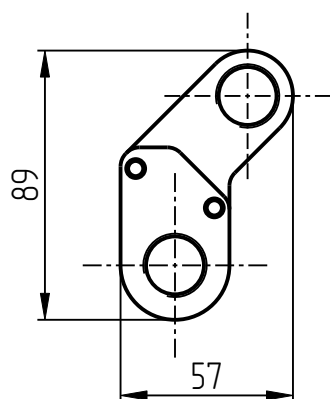
10. Упорное кольцо
KDG-V3-401



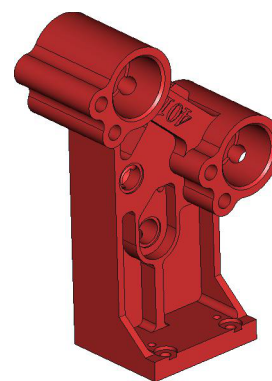
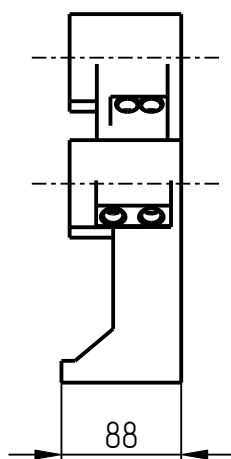
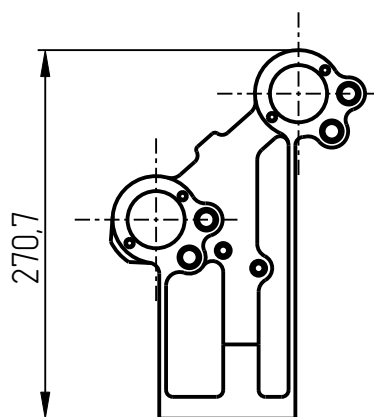
11. Втулка большая
KDG-V4-401



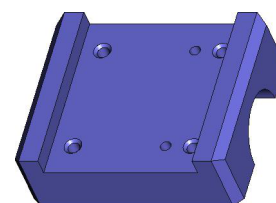
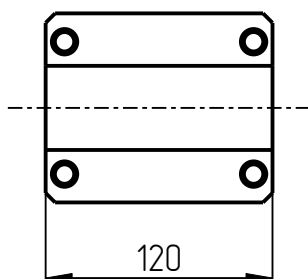
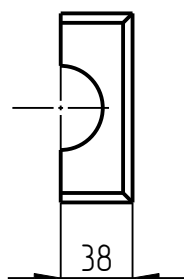
12. Заглушка 2"- 8 ниток
KDG-Z-2D-8N-401



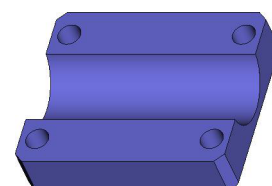
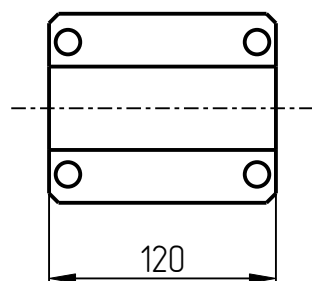
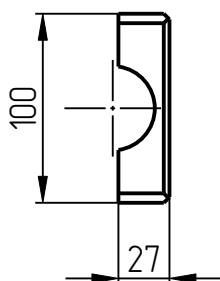
13. Держатель щупцов
kdg-dsh-01-401



14. Корпус
KDG-401-001-001



11. Держатель
KDG-401-014-003-01



12. Держатель
KDG-401-014-003-02