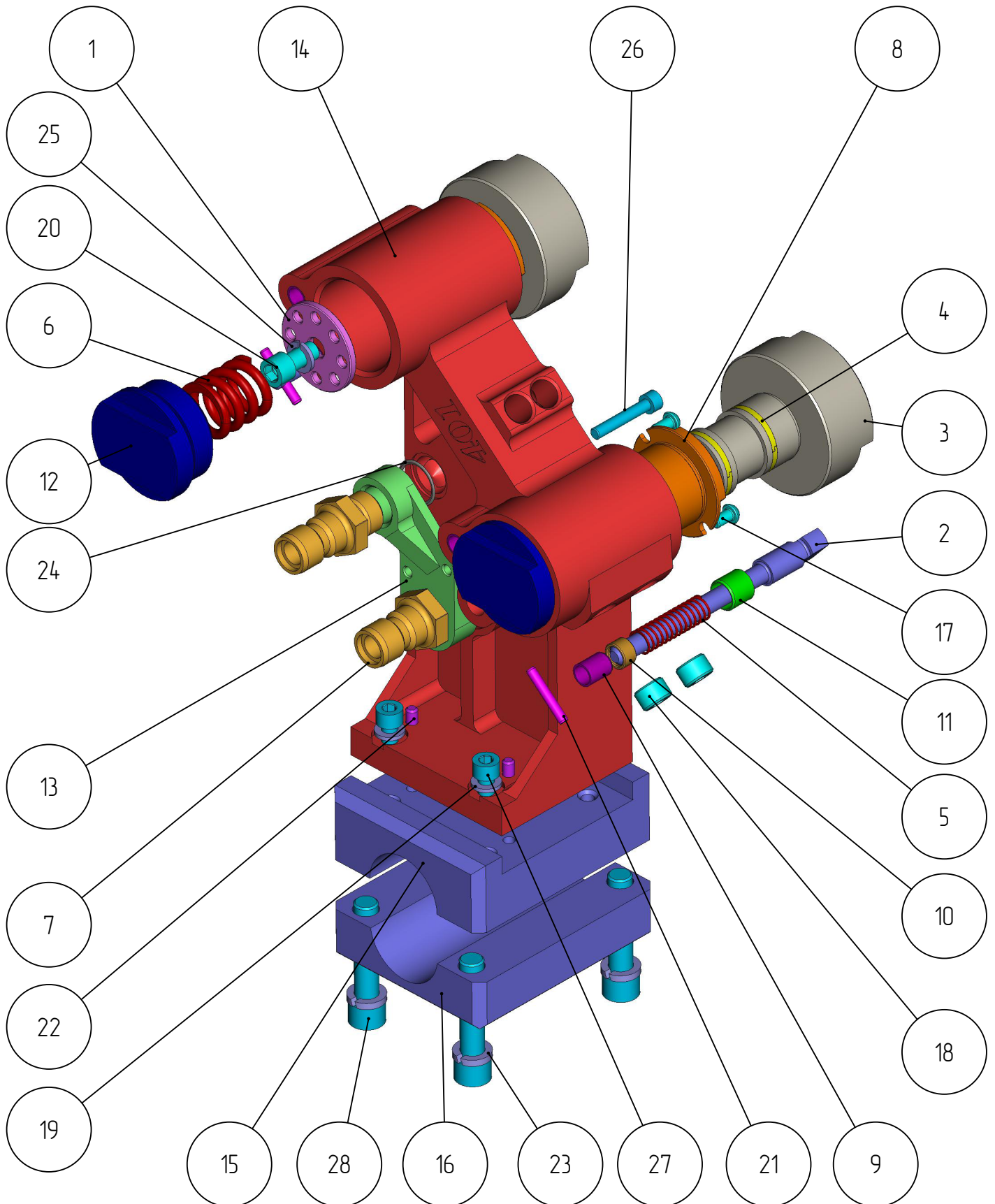


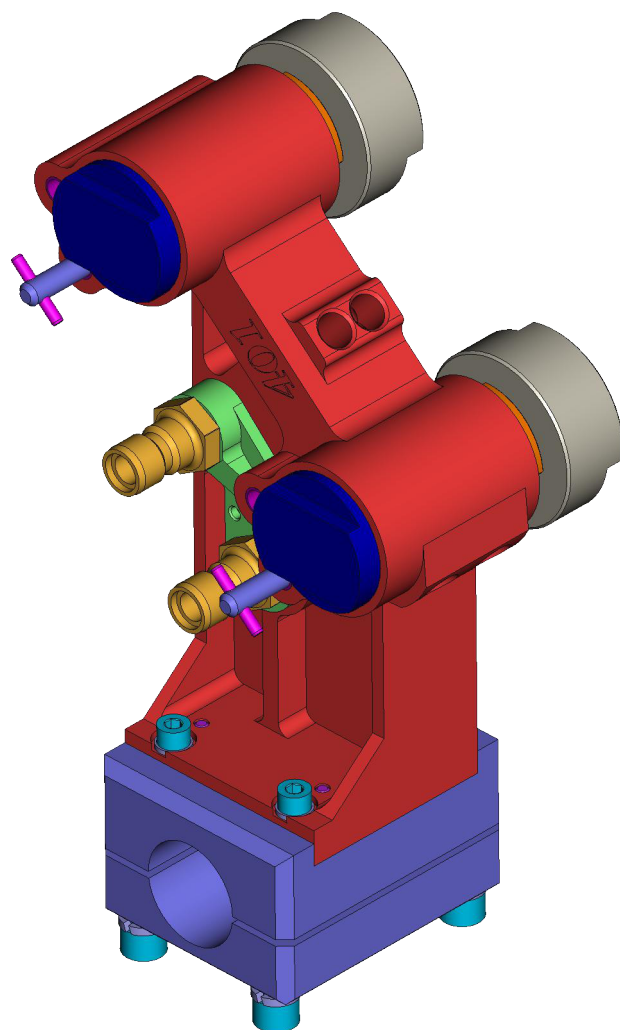
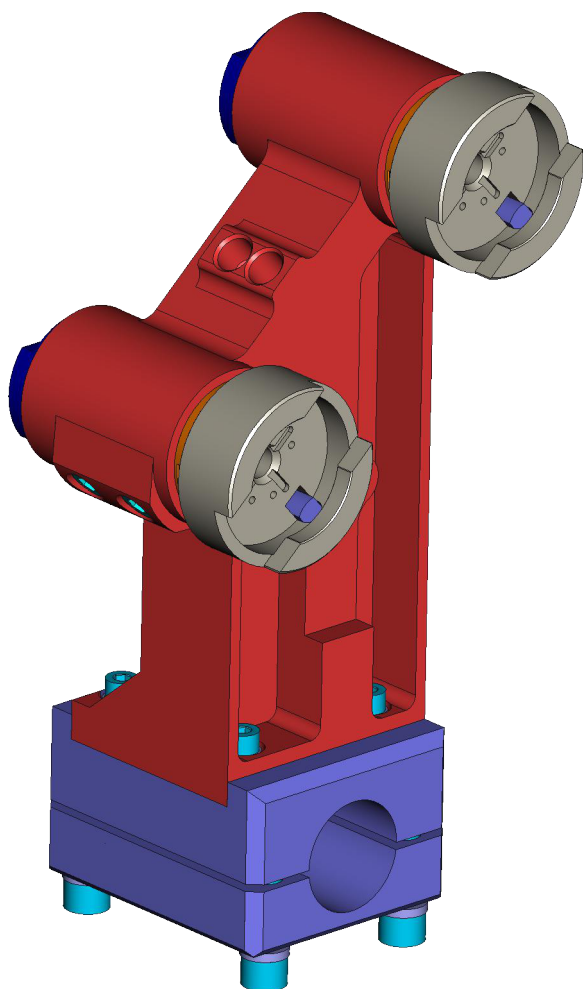
401

KDG-401-014
BLOW HEAD HOLDER (5-1/2")
(MPH 401-139_7_ISP2)

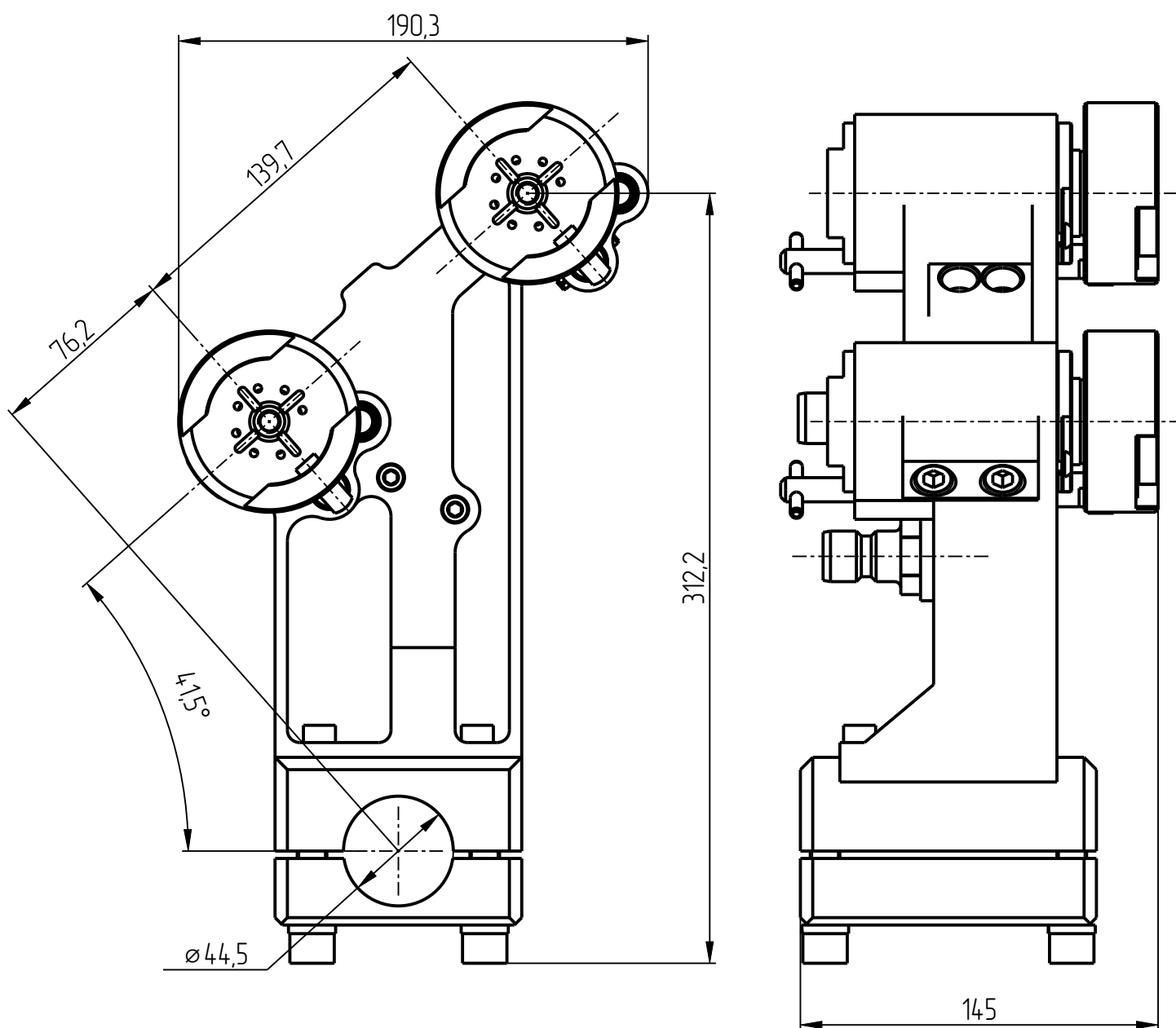
Blow head holder KDG-401-014



Blow head holder KDG-401-014

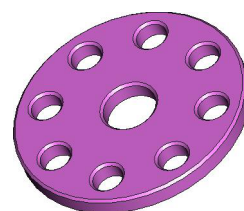
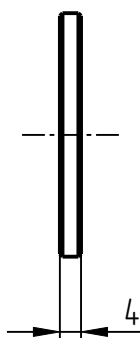
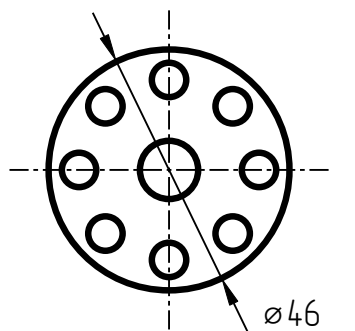


Blow head holder KDG-401-014

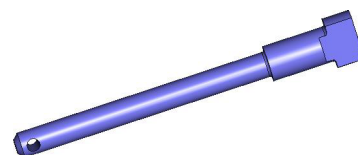
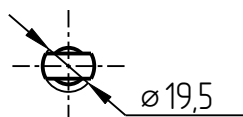
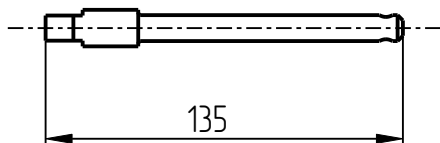


Blow head holder KDG-401-014 Specification

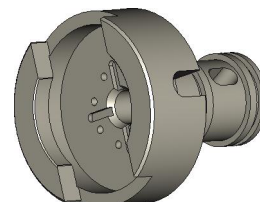
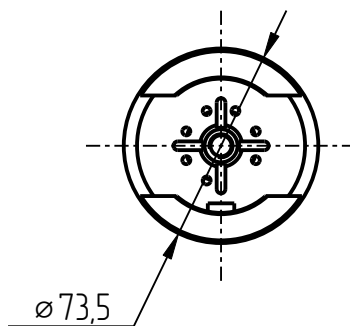
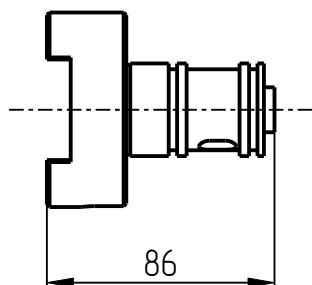
№ pos.	Code	Name	Qty
Parts			
1	KDG-D-U-46X4-401	Wasger	2
2	KDG-F	Position pin	2
3	KDG-G2-401	Blow head	2
4	KDG-K-P-401	Piston ring	4
5	KDG-P-13x62-401	Spring	2
6	KDG-P-30X35-401	Spring	2
7	KDG-SHT-G1_2-401	Connector	2
8	KDG-V1-401	Bushing	2
9	KDG-V2-401	Bushing	4
10	KDG-V3-401	Retaining ring	4
11	KDG-V4-401	Bushing	4
12	KDG-Z-2D-8N-401	Retainer 2"- 8	2
13	kdg-dsh-01-401	Connector holder	1
14	KDG-401-001-001	Body	1
15	KDG-401-014-003-01	Holder	1
16	KDG-401-014-003-02	Holder	1
Standard parts			
17	Screw M6x10 DIN 7380		4
18	Screw MK16x1,5 DIN 906		3
19	Spring washer B8-A4 DIN 127		4
20	Screw DIN 912-UNC3/8"-16x3/4"		2
21	Spring pin 5x30 DIN 1481		2
22	Pin 6C3x25 DIN 6325		2
23	Washer 12T DIN 127		4
24	O-ring 020-024-25-1-7 GOST 18829-73		2
25	Washer 10 DIN 127		2
26	Screw M6x35 DIN 912		2
27	Screw M8x25 DIN 912		4
28	Screw M12x55 DIN 912		4



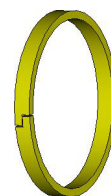
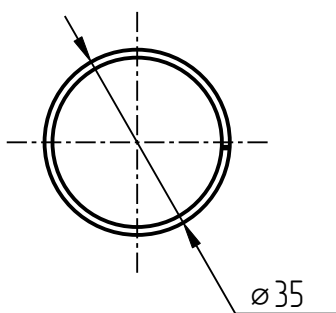
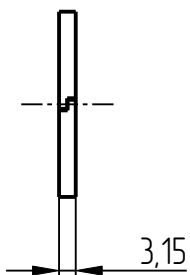
1. Washer
KDG-D-U-46X4-401



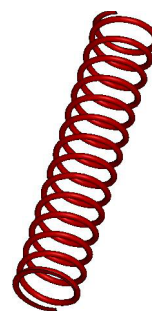
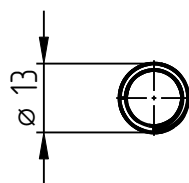
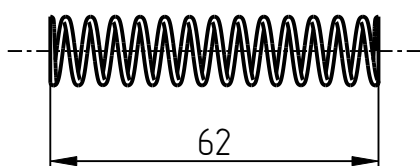
2. Position pin
KDG-F-401



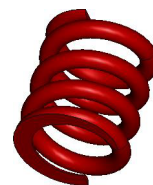
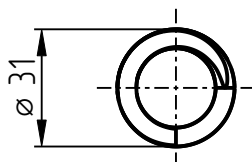
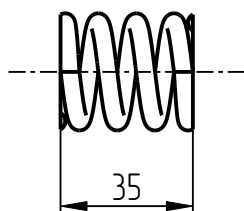
3. Blow head
KDG-G2-401



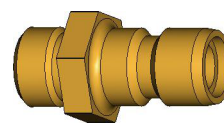
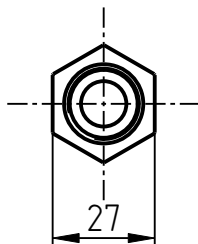
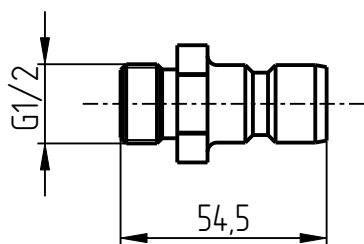
4. Piston ring
KDG-K-P-401



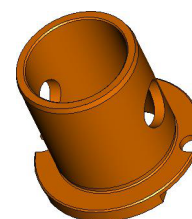
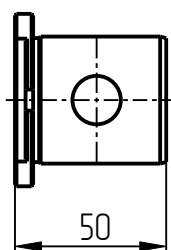
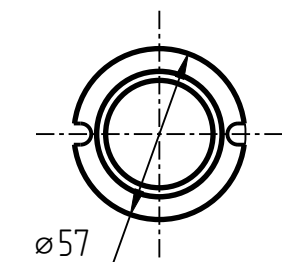
5. Spring
KDG-P-13x62-401



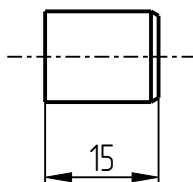
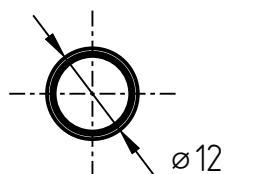
6. Spring
KDG-P-30X35-401



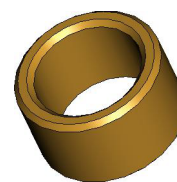
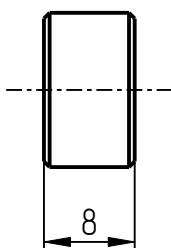
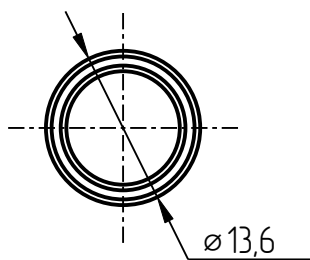
7. Connector
KDG-SHT-G1_2-401



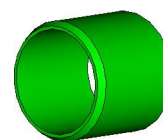
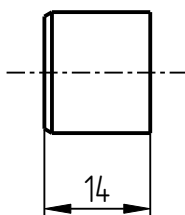
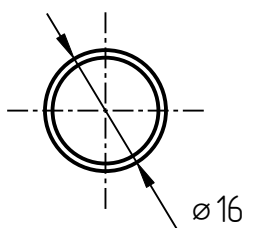
8. Bushing
KDG-V1-401



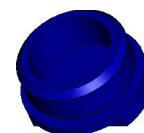
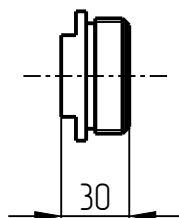
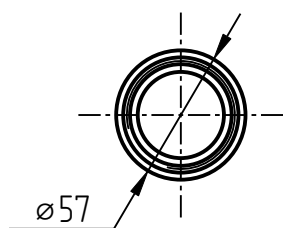
9. Bushing
KDG-V2-401



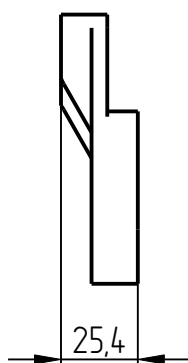
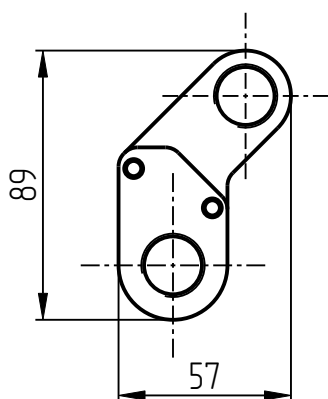
10. Retaining ring
KDG-V3-401



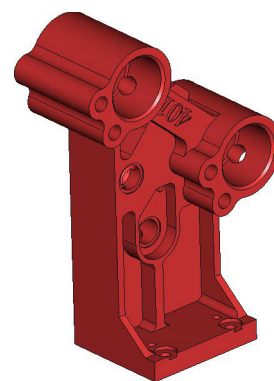
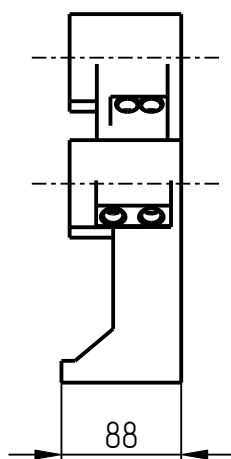
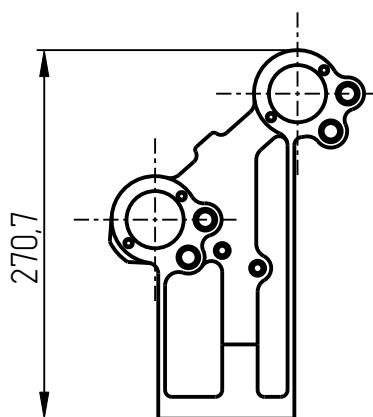
11. Bushing
KDG-V4-401



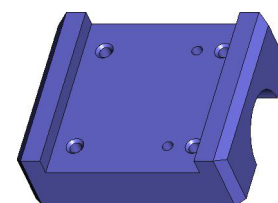
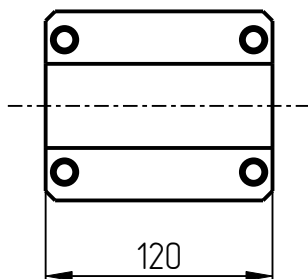
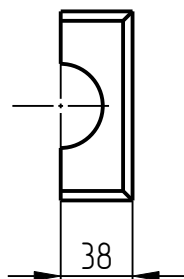
12. Retainer 2"- 8
KDG-Z-2D-8N-401



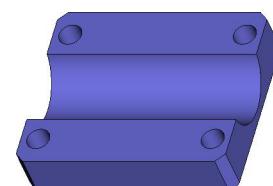
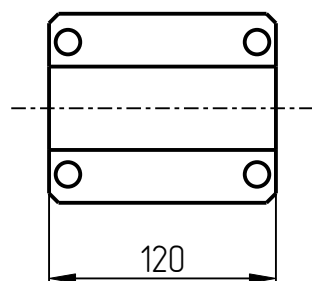
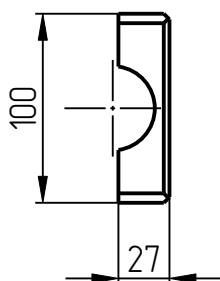
13. Connector holder
kdg-dsh-01-401



14. Body
KDG-401-001-001



11. Holder
KDG-401-014-003-01



12. Holder
KDG-401-014-003-02