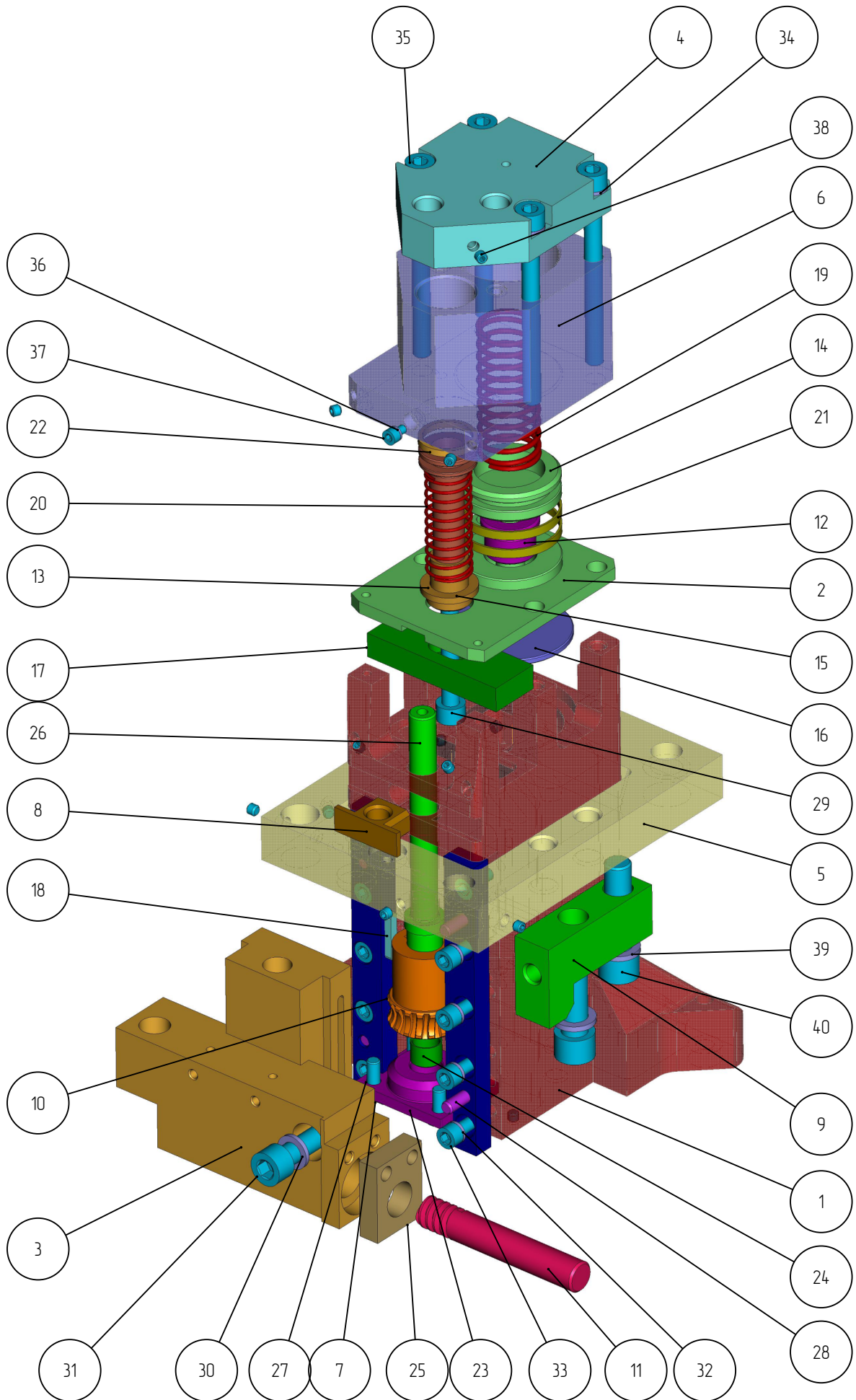


401

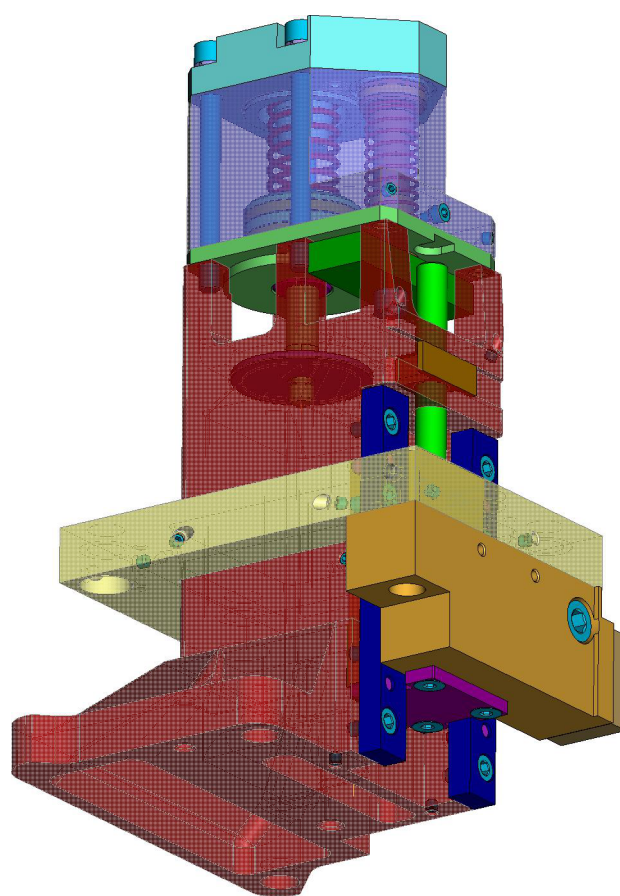
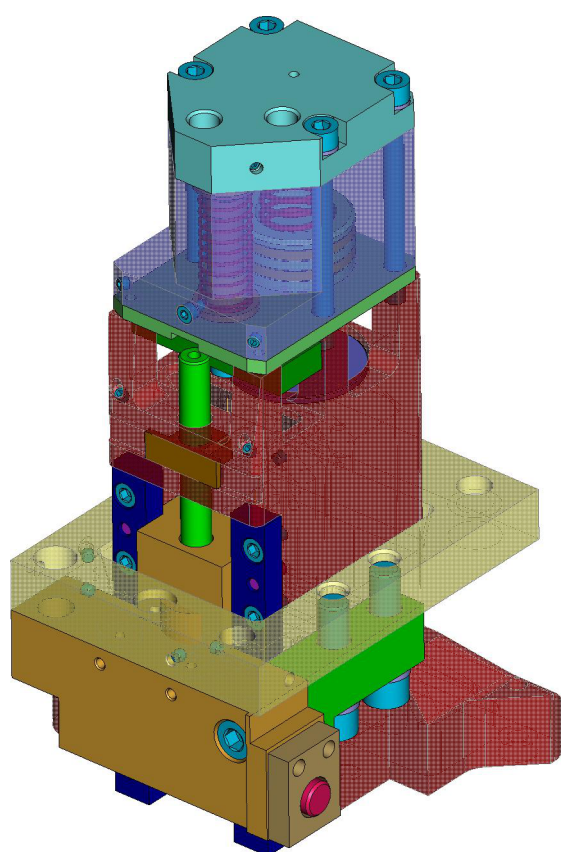
KKL-401-001
VALVE
(LR(H)-10-120)

Valve KKL-401-001

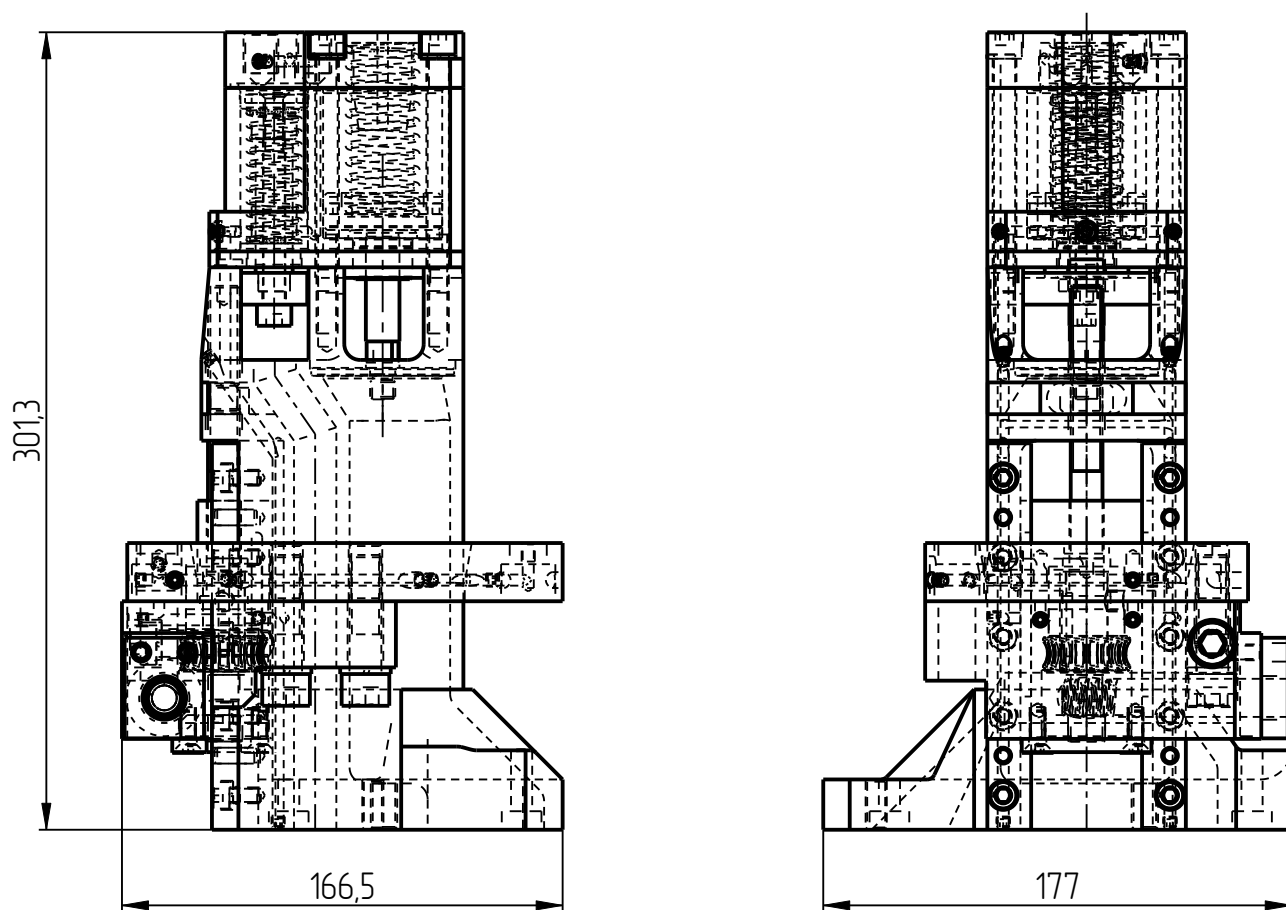
401



Valve KKL-401-001

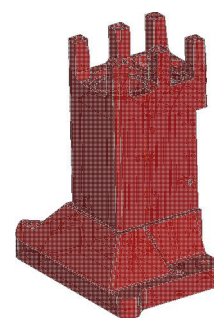
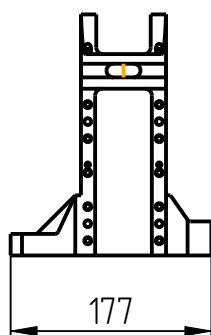
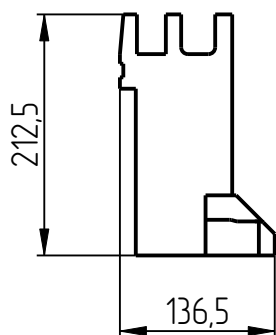


Valve KKL-401-001

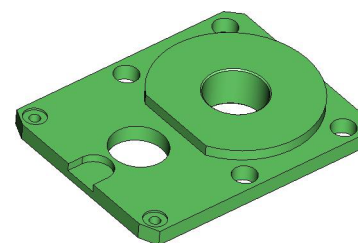
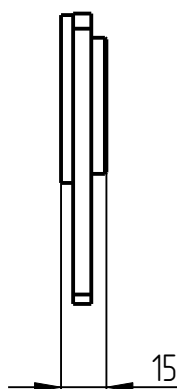
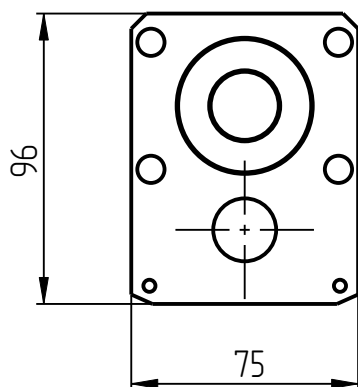


Valve KKL-401-001 Specification

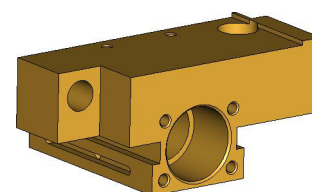
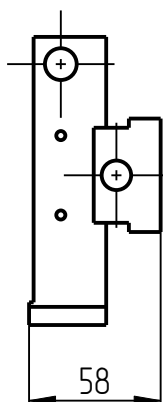
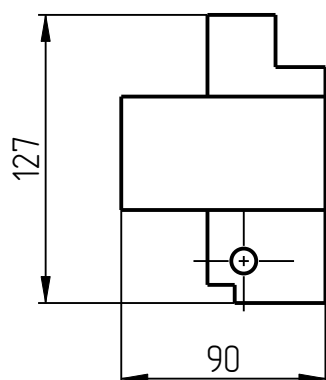
№ pos.	Code	Name	Qty
Parts			
1	KKL-401-001-000	Main body	1
2	KKL-401-001-001	Spacer plate	1
3	KKL-401-001-002	Gear-box	1
4	KKL-401-001-003	Valve head	1
5	KKL-401-001-004	Valve frame	1
6	KKL-401-001-005	Valve block	1
7	KKL-401-001-006	Bearing slide	2
8	KKL-401-001-007	Nut	1
9	KKL-401-001-008	Angle	1
10	KKL-401-001-010-2	Gear	1
11	KKL-401-001-010-3	Worm	1
12	KKL-401-001-011	Bushing	1
13	KKL-401-001-012	Bushing	1
14	KKL-401-001-013	Piston	1
15	KKL-401-001-014	Piston	1
16	KKL-401-001-015	Valve disk	1
17	KKL-401-001-016	Key	1
18	KKL-401-001-017	Key	1
19	KKL-401-001-018	Spring	1
20	KKL-401-001-019	Spring	1
21	KKL-401-001-020	Piston ring	2
22	KKL-401-001-021	Piston ring	1
23	KKL-401-001-022	Thrust plate	1
24	KKL-401-001-022-01	Bushing	1
25	KKL-401-001-023	Lock	1
26	KKL-401-001-024	Pinion shaft	1
Standard parts			
27	Screw M6x16 DIN7991		4
28	Pin 6Гx16 DIN 6325		4
29	Screw M8x80 DIN 912		1
30	Spring washer 10J DIN 127		1
31	Screw M10x40 DIN 912		1
32	Spring washer 6J DIN 127		10
33	Screw M6x11 DIN 912		10
34	Spring washer 8 DIN 127		4
35	Screw M8x90 DIN 912		4
36	Spring washer 4J DIN 127		1
37	Screw M4x6 DIN 912		1
38	Threaded plug M5x4 DIN 913		16
39	Spring washer 12J DIN 127		2
40	Screw M12x45 DIN 912		2



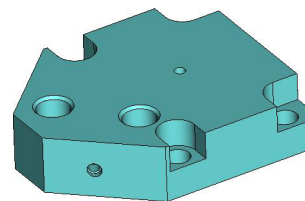
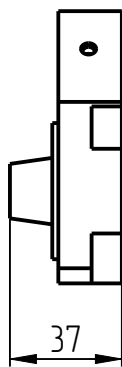
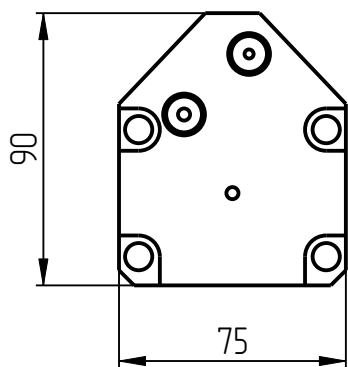
1. Main body
KKL-401-001-000



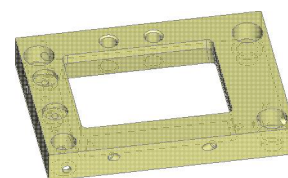
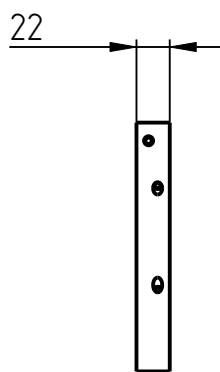
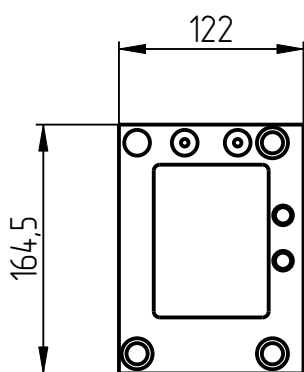
2. Spacer plate
KKL-401-001-001



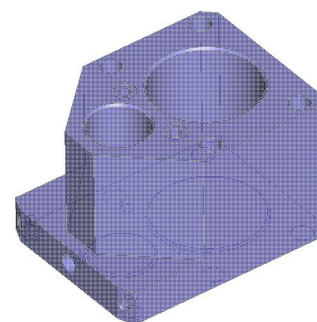
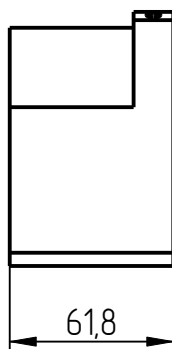
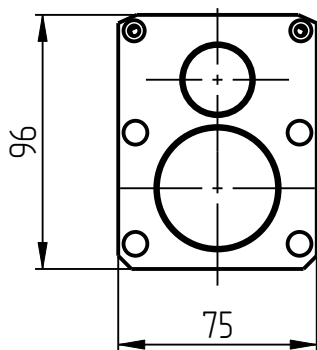
3. Gear-box
KKL-401-001-002



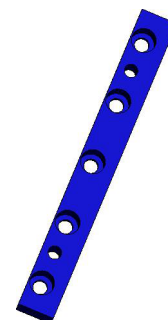
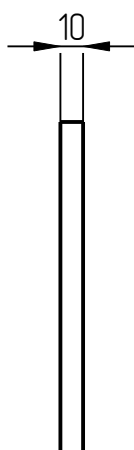
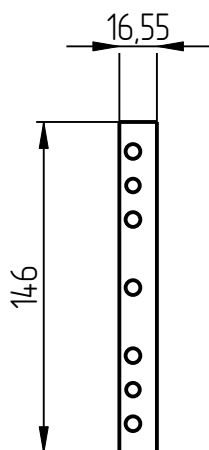
4. Valve head
KKL-401-001-003



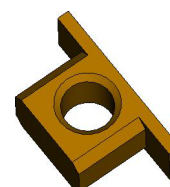
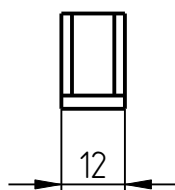
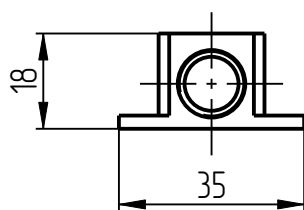
5. Valve frame
KKL-401-001-004



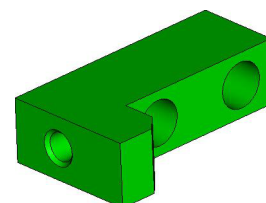
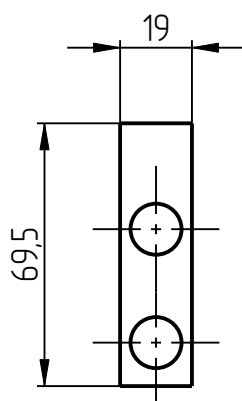
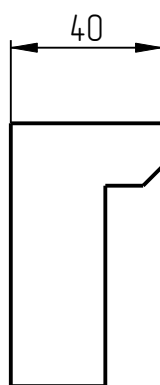
6. Valve block
KKL-401-001-005



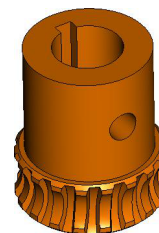
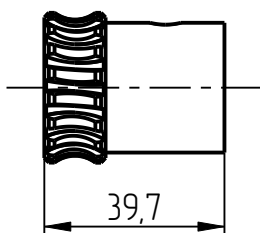
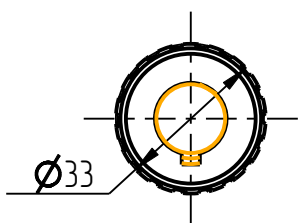
7. Bearing slide
KKL-401-001-006



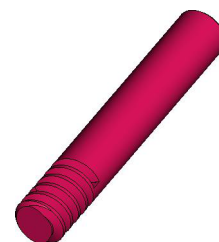
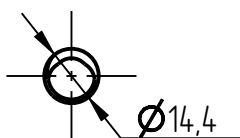
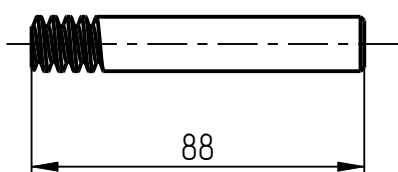
8. Nut
KKL-401-001-007



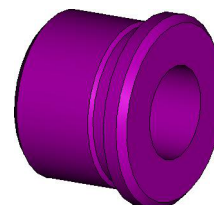
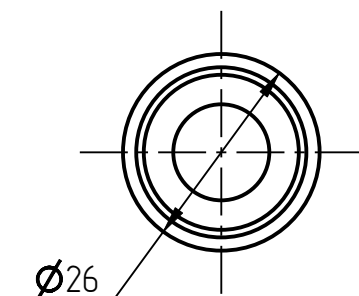
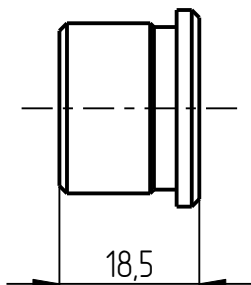
9. Angle
KKL-401-001-008



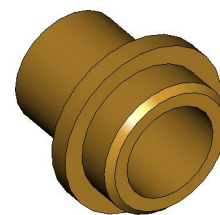
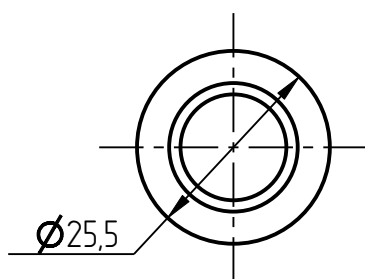
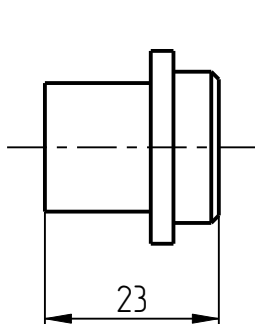
10. Gear
KKL-401-001-010-2



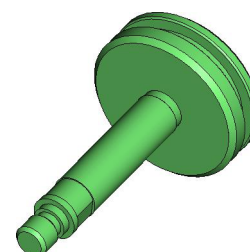
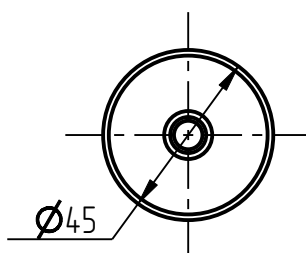
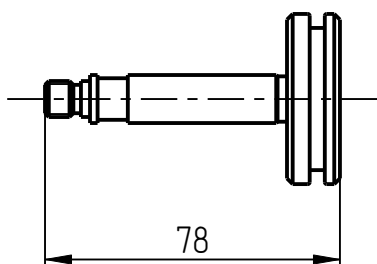
11. Worm
KKL-401-001-010-3



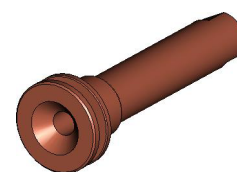
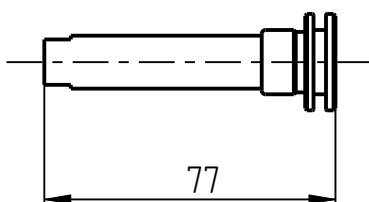
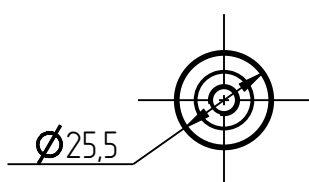
12. Bushing
KKL-401-001-011



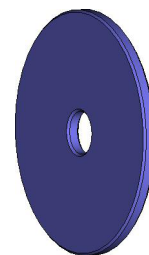
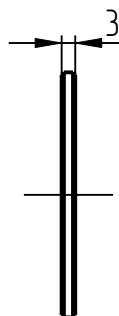
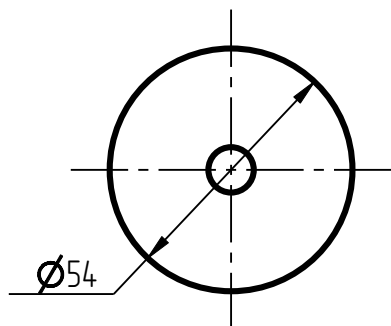
13. Bushing
KKL-401-001-012



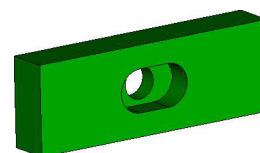
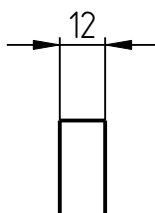
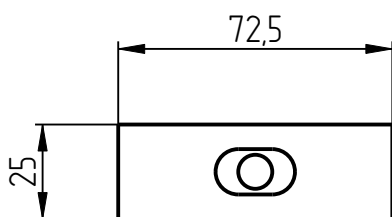
14. Piston
KKL-401-001-013



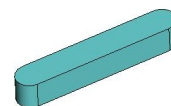
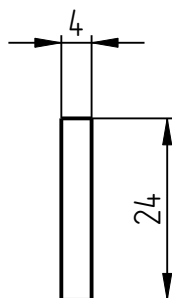
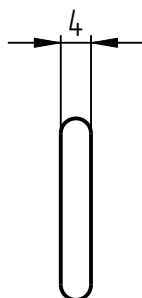
15. Piston
KKL-401-001-014



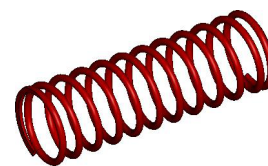
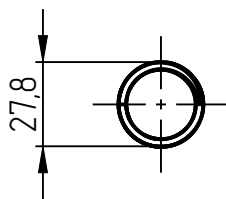
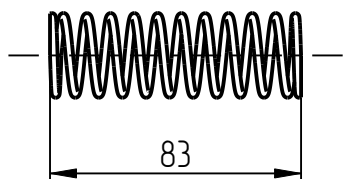
16. Valve disk
KKL-401-001-015



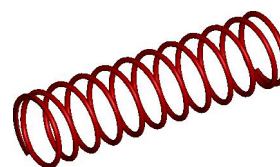
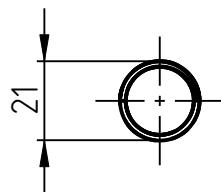
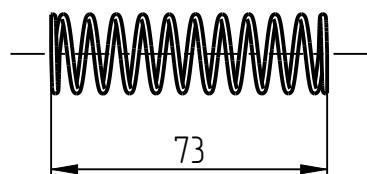
17. Key
KKL-401-001-016



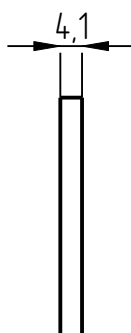
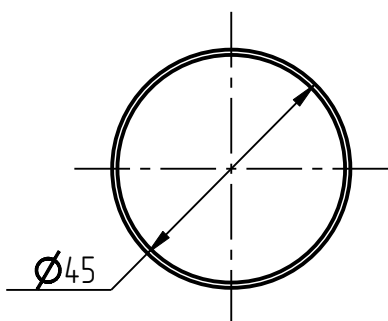
18. Spring
KKL-401-001-017



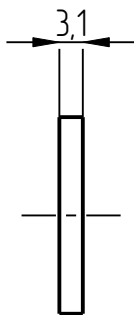
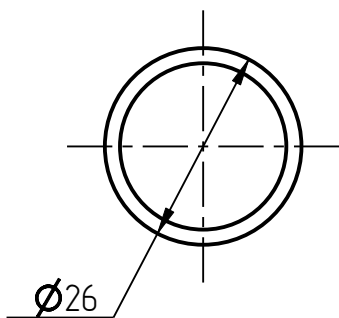
19. Spring
KKL-401-001-018



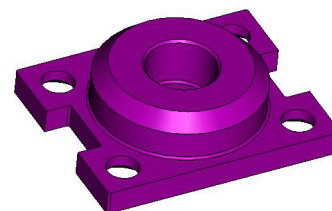
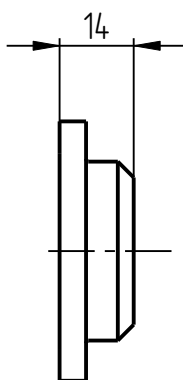
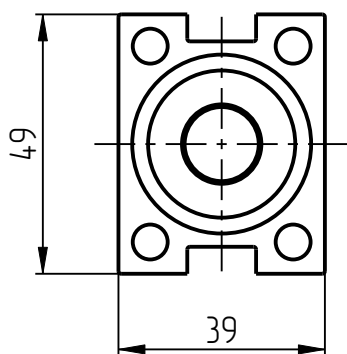
20. Spring
KKL-401-001-019



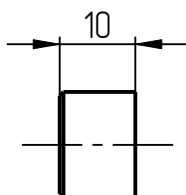
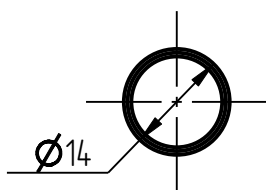
21. Piston ring
KKL-401-001-020



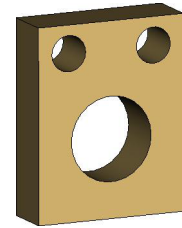
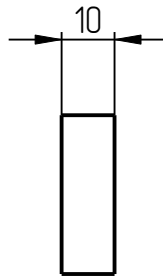
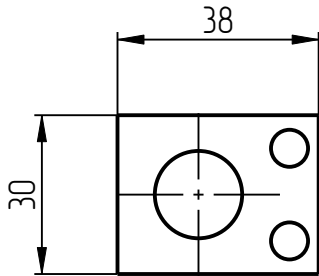
22. Piston ring
KKL-401-001-021



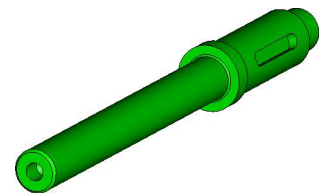
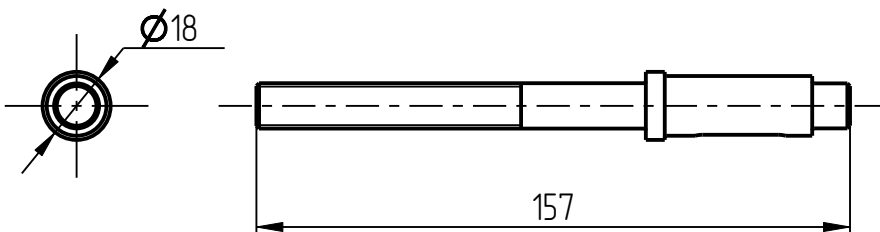
23. Thrust plate
KKL-401-001-022



24. Bushing
KKL-401-001-022-01



25. Lock
KKL-401-001-023



26. Pinion shaft
KKL-401-001-024