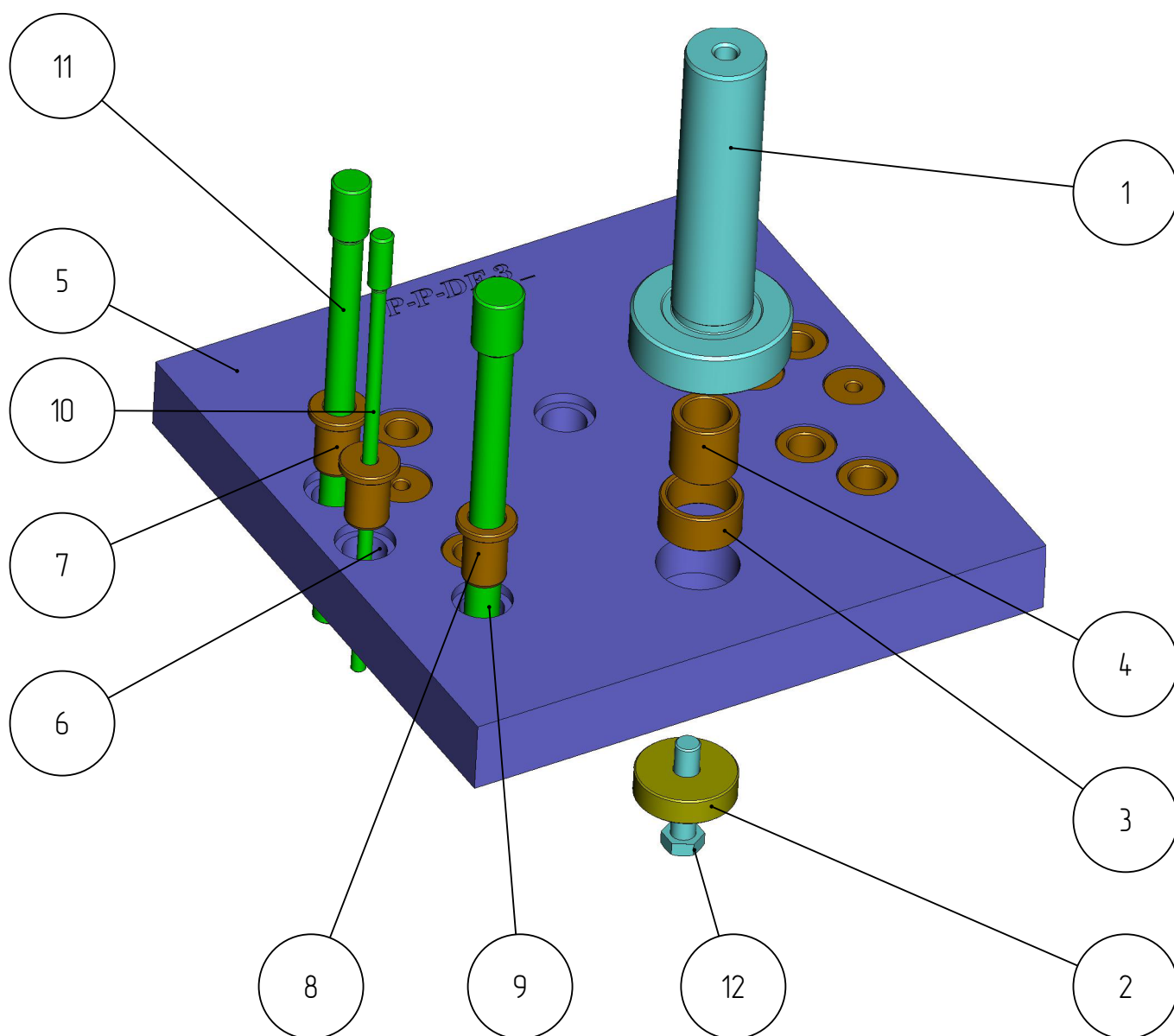


401

P-P-DF-401-003
Плита поверочная
для держателей форм
191-53492, 23-1013, 23-1017

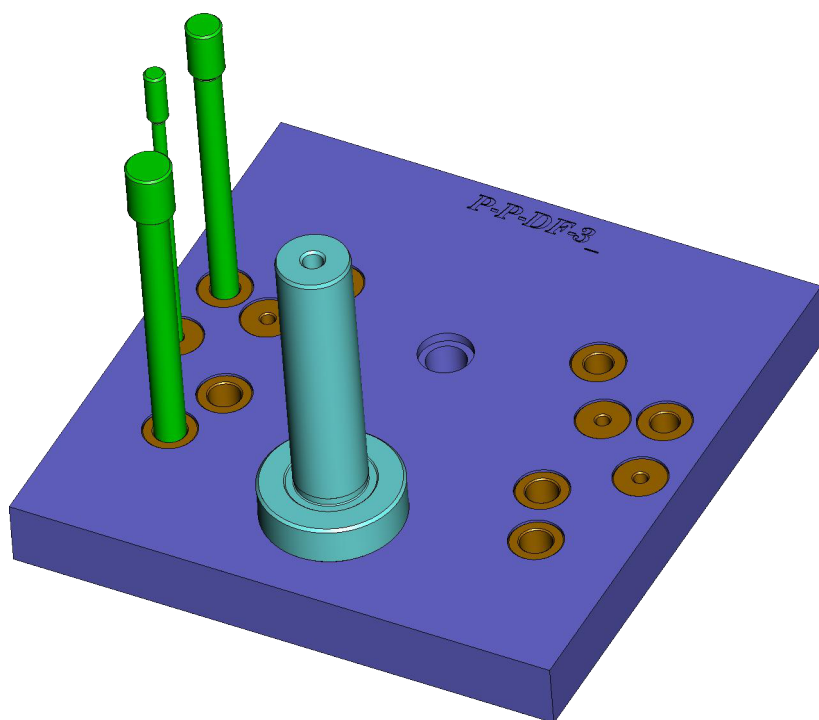
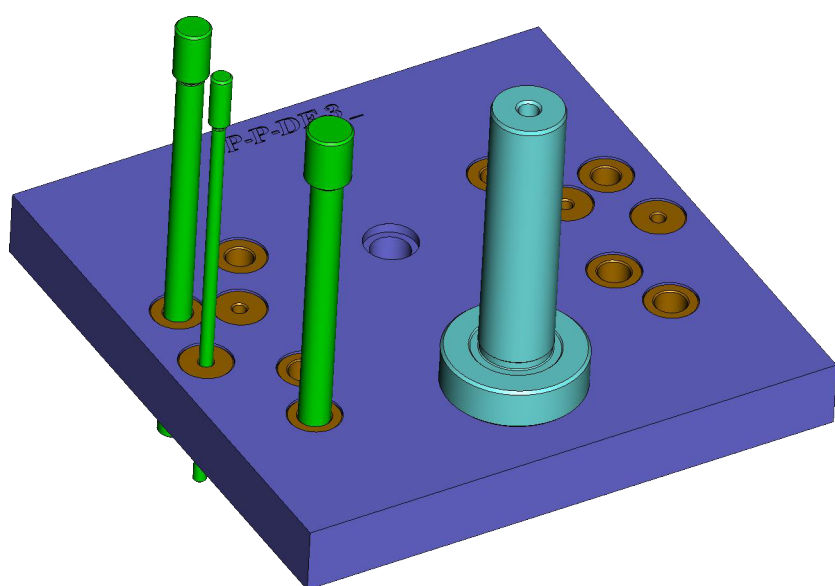
Плита поверочная 5-1/2"

P-P-DF-401-003

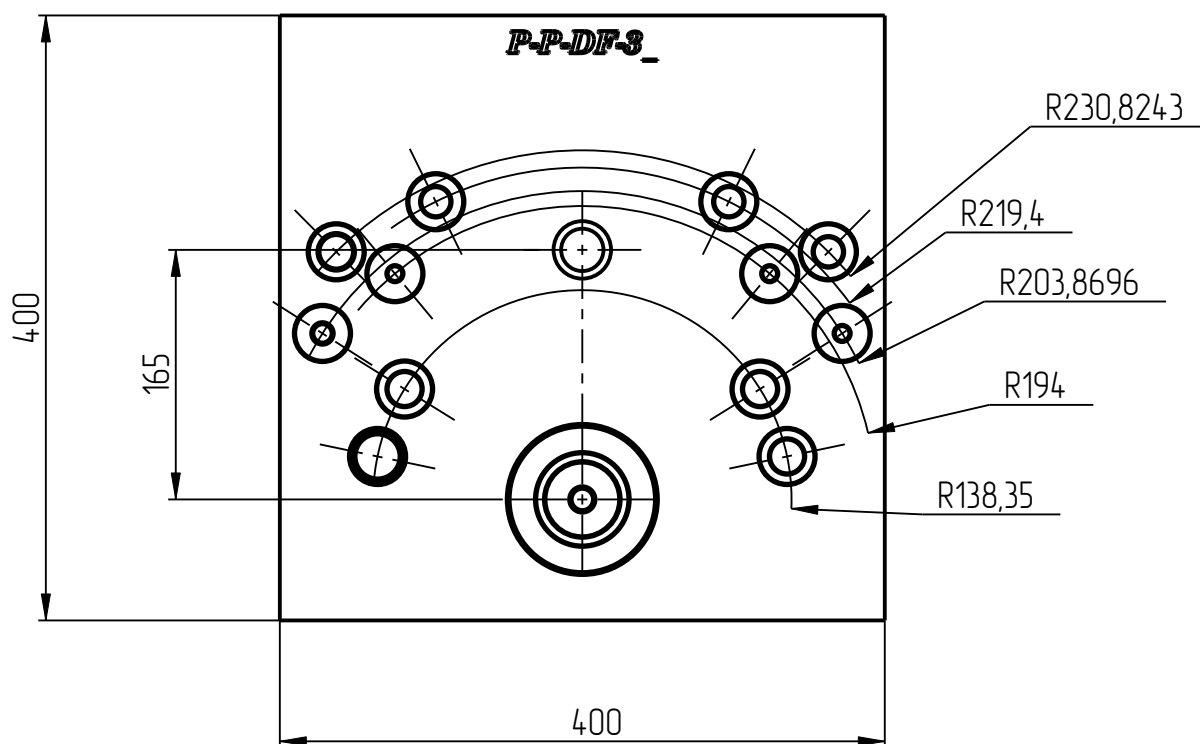
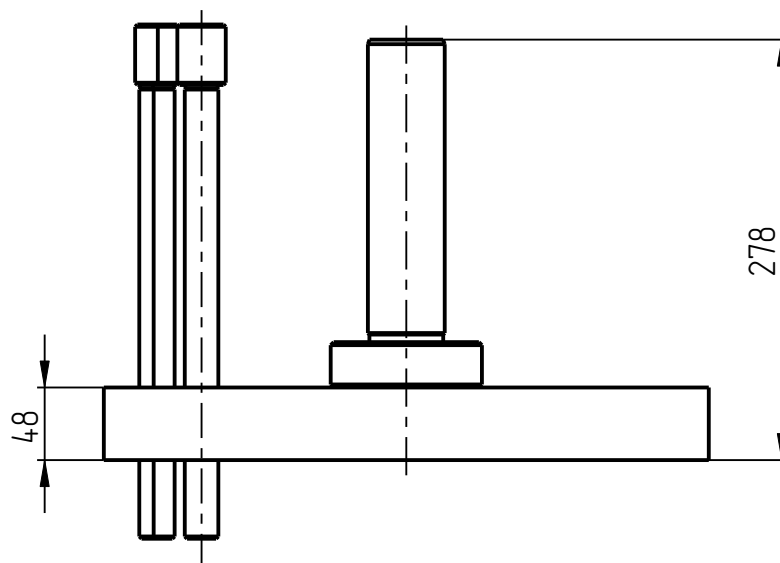


Плита поверочная 5-1/2"

P-P-DF-401-003

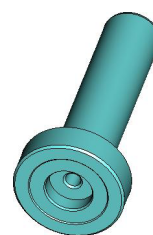
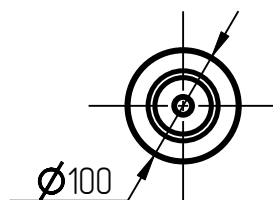
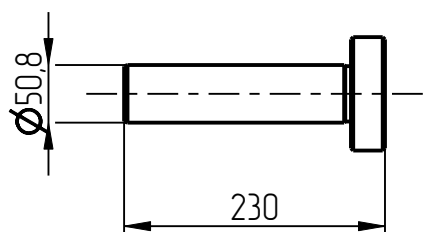


Плита поверочная 5-1/2"
P-P-DF-401-003

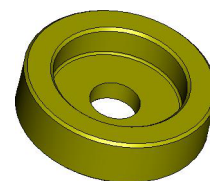
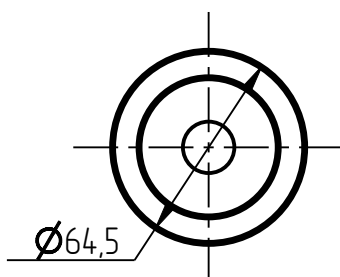
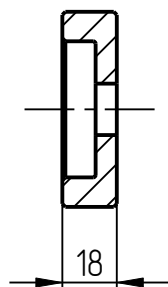


Плита поверочная Р-Р-DF-401-003
Спецификация

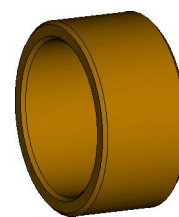
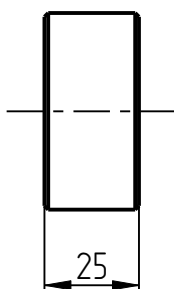
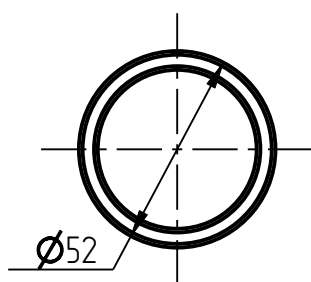
№ поз.	Шифр	Наименование	Кол-во
Детали			
1	р-р-df-401-001-002	Центральный вал	1
2	р-р-df-401-001-003	Шайба	1
3	р-р-df-401-001-004	Втулка пальца	1
4	р-р-df-401-001-005	Направляющая пальца	1
5	р-р-df-401-003-001	Плита поверочная	1
6	Р-Р-DF-Р4-9_5	Втулка	4
7	Р-Р-DF-Р4-19_05	Втулка	4
8	Р-Р-DF-Р4-22_2	Втулка	4
9	Р-Р-DF-Р8-01	Палец поверочный	1
10	Р-Р-DF-Р8-02	Палец поверочный	1
11	Р-Р-DF-Р8-06	Палец поверочный	1
Стандартные изделия			
12		Болт М16х70 DIN 6921	1



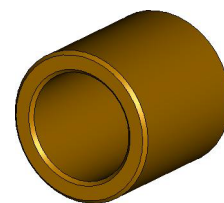
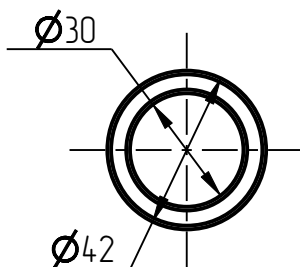
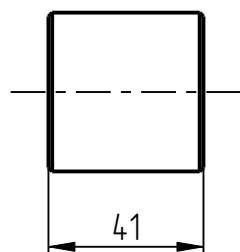
1. Центральний вал
p-p-df-401-001-002



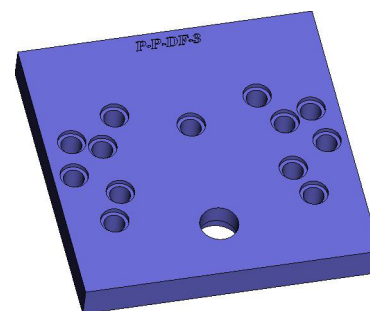
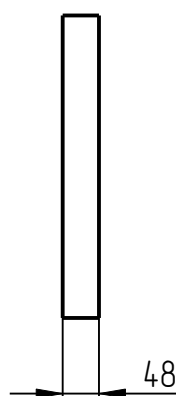
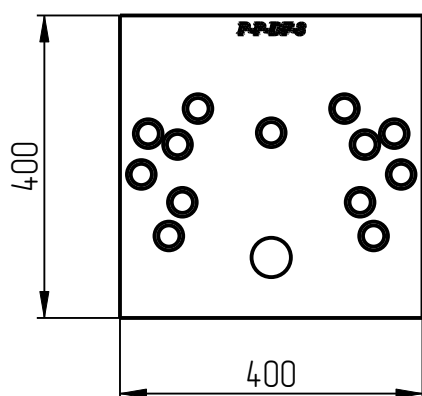
2. Шаўда
p-p-df-401-001-003



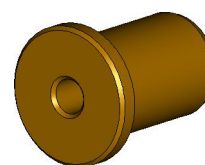
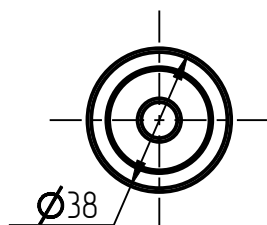
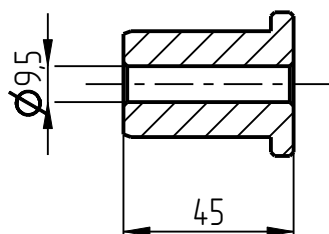
3. Втулка пальца
p-p-df-401-001-004



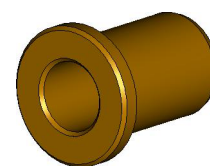
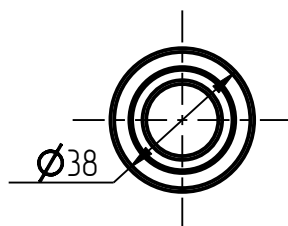
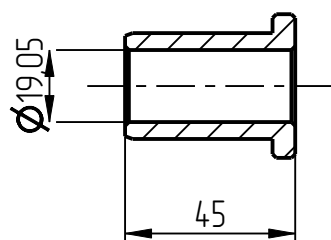
4. Направляющая пальца
р-р-df-401-001-005



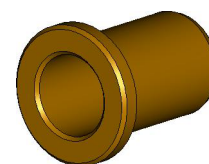
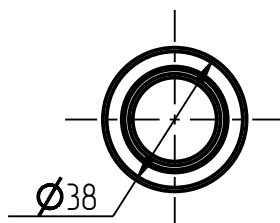
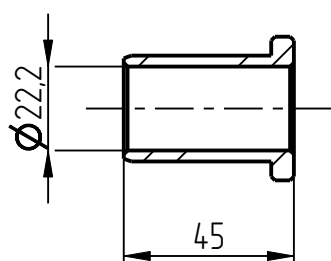
5. Плита поверочная для
р-р-df-401-003-001



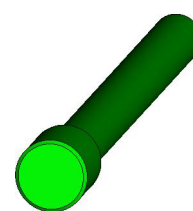
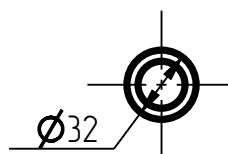
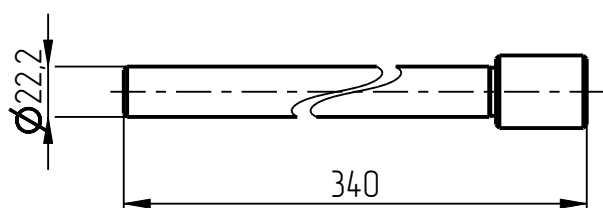
6. Втулка
P-P-DF-P4-9_5



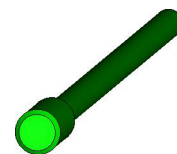
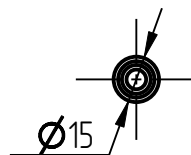
7. Втулка
P-P-DF-P4-19_05



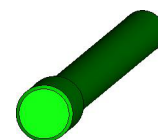
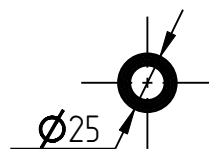
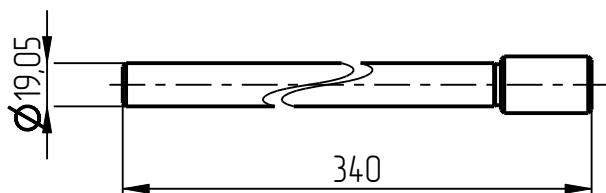
8. Втулка
P-P-DF-P4-22_2



9. Палец поверочный
P-P-DF-P8-01



10. Палец поверочный
P-P-DF-P8-02



11. Палец поверочный
P-P-DF-P8-06