

401

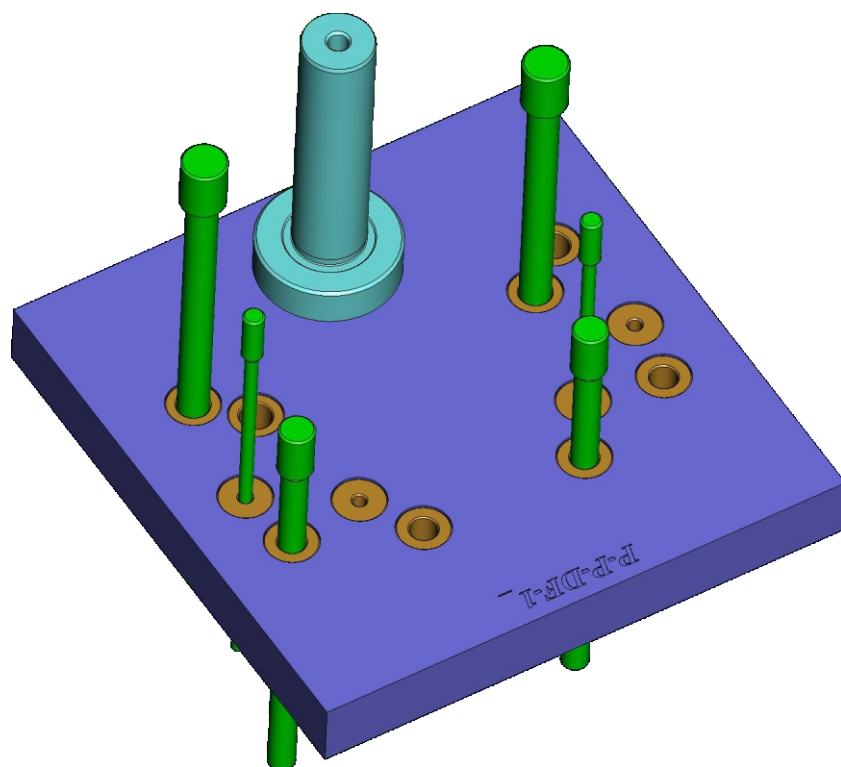
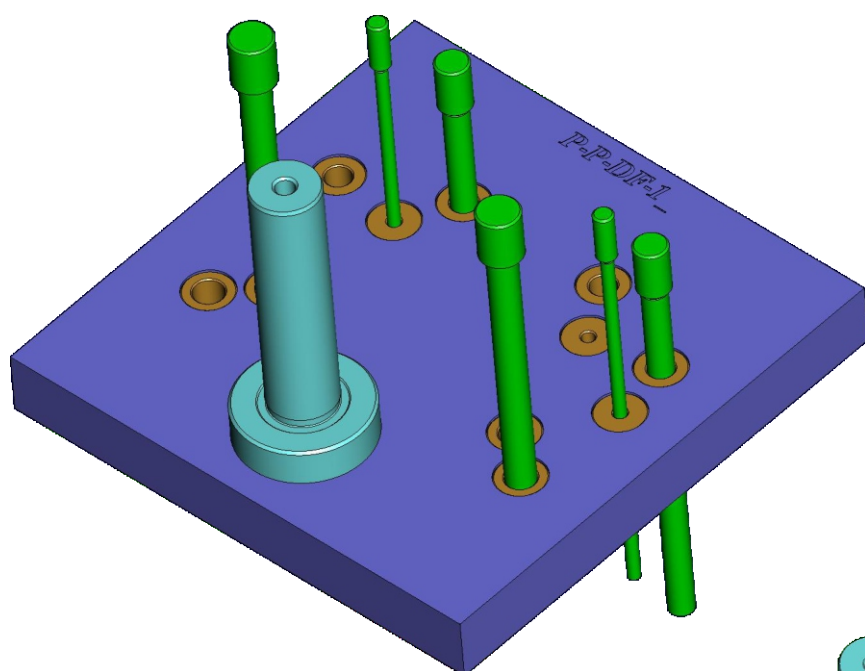
*P-P-DF-401-001*

*Плита поверочная 6-1/4"*

*для держателей EF23-960 и EF23-961*

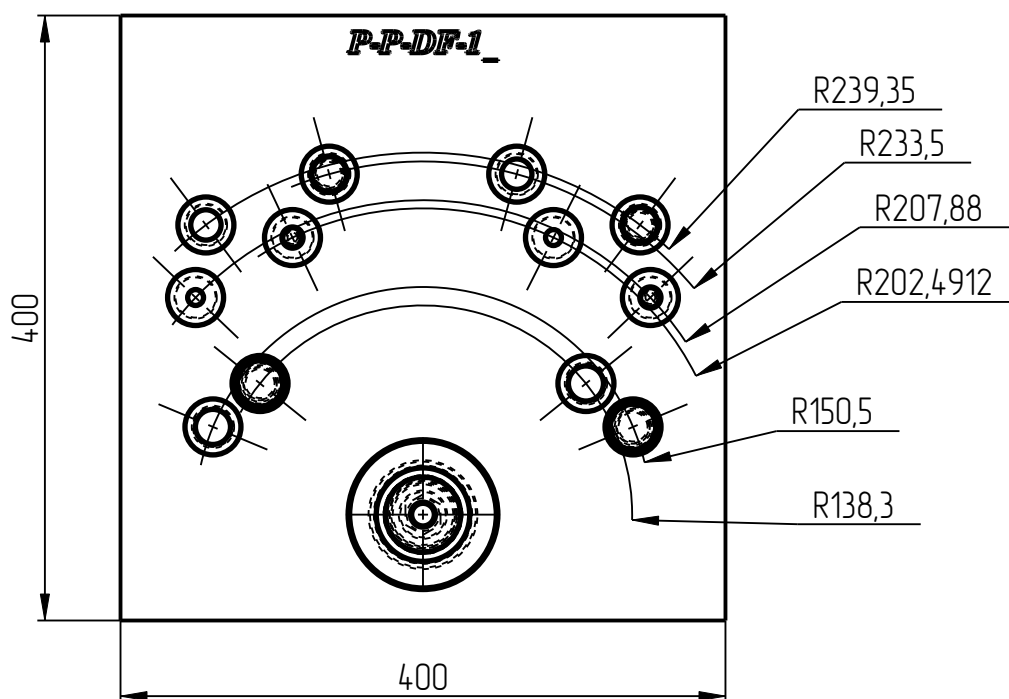
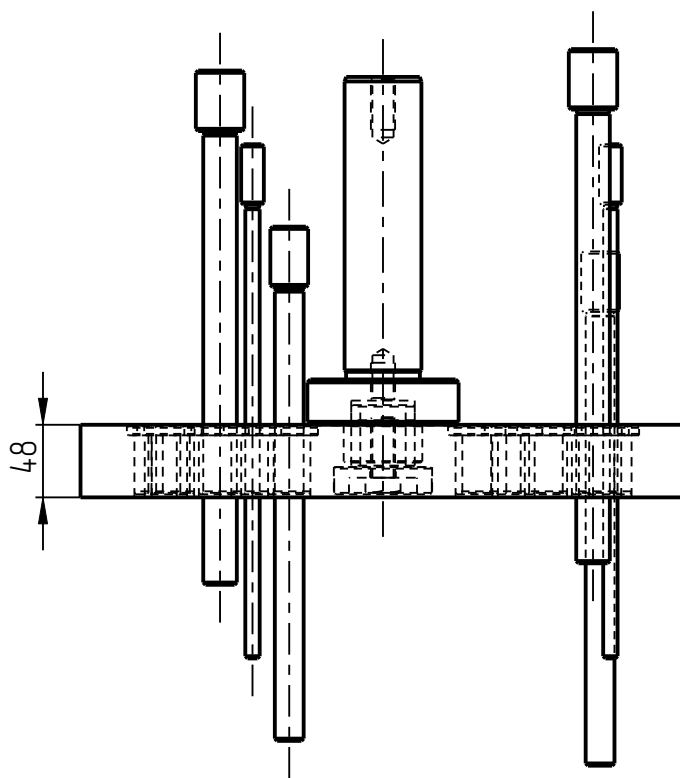


Плита поверочная 6-1/4" для держателей EF23-960 и EF23-961  
P-P-DF-401-001



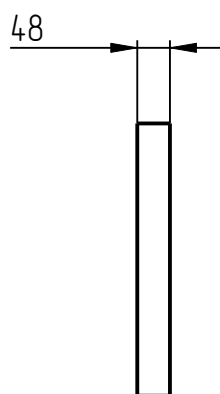
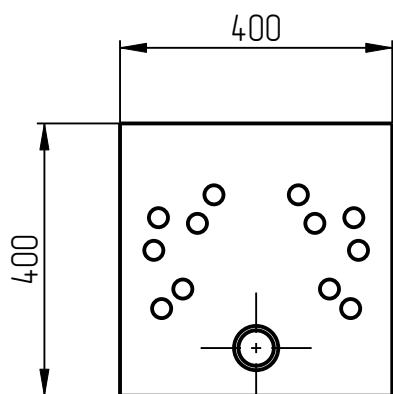
Плита поворачивная 6-1/4" для держателей EF23-960 и EF23-961

P-P-DF-401-001

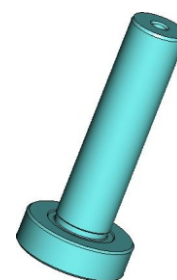
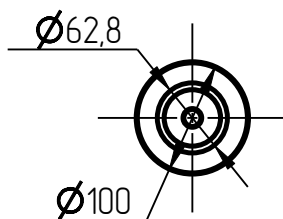
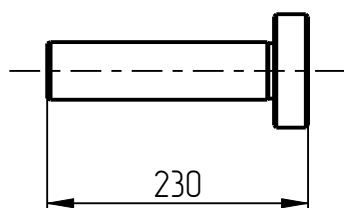


Плита поверочная 6-1/4" P-P-DF-401-001  
Спецификация

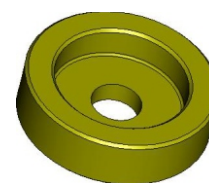
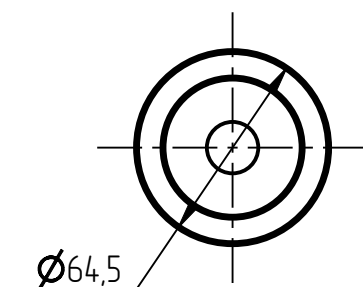
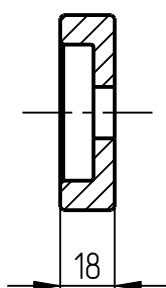
№ поз.	Шифр	Наименование	Кол-во
<b>Детали</b>			
1	p-p-df-401-001-001	Плита поверочная	1
2	p-p-df-401-001-002	Центральный вал	1
3	p-p-df-401-001-003	Шайба	1
4	p-p-df-401-001-004	Втулка пальца	1
5	p-p-df-401-001-005	Направляющая пальца	1
6	P-P-DF-P4-9_5	Втулка	4
7	P-P-DF-P4-19_05	Втулка	4
8	P-P-DF-P4-22_2	Втулка	4
9	P-P-DF-P8-01	Палец поверочный	2
10	P-P-DF-P8-02	Палец поверочный	2
11	P-P-DF-P8-06	Палец поверочный	2
<b>Стандартные изделия</b>			
12	Болт M16x40 DIN 6921		1



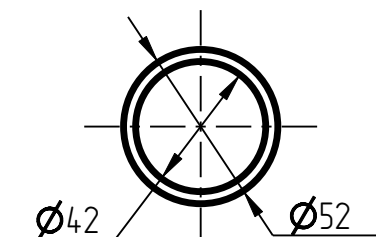
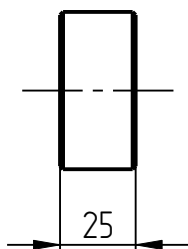
1. Плита поверочная  
р-р-df-401-001-001



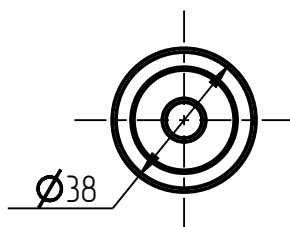
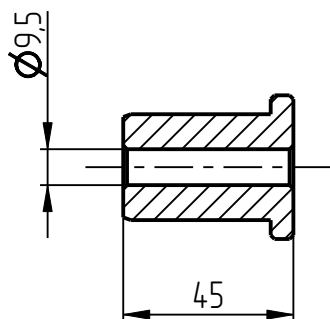
2. Центральный вал  
р-р-df-401-001-002



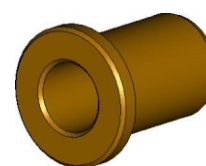
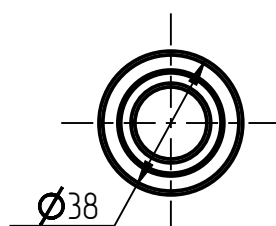
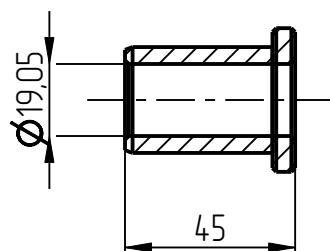
3. Шайба  
р-р-df-401-001-003



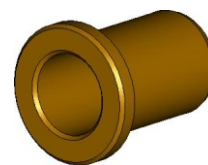
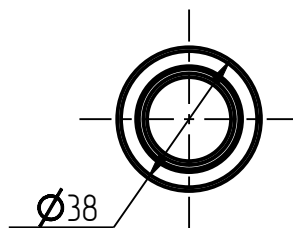
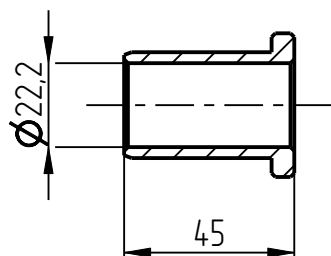
4. Втулка пальца  
P-P-DF-401-001-004



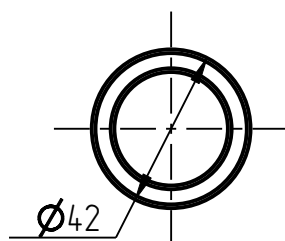
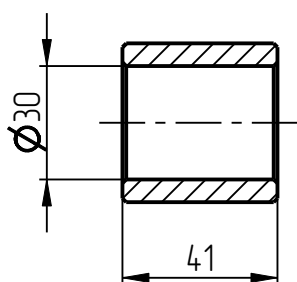
5. Втулка  
P-P-DF-P4-9\_5



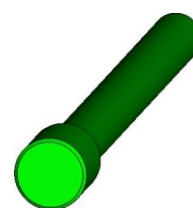
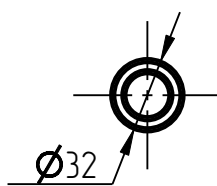
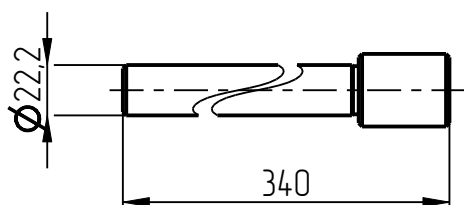
6. Втулка  
P-P-DF-P4-19\_05



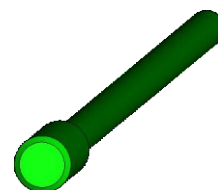
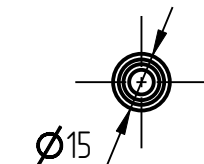
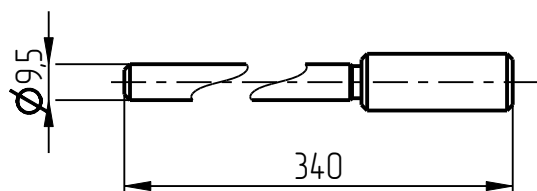
7. Втулка  
P-P-DF-P4-22\_2



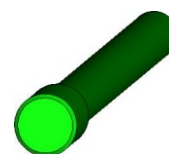
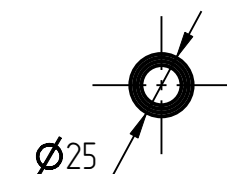
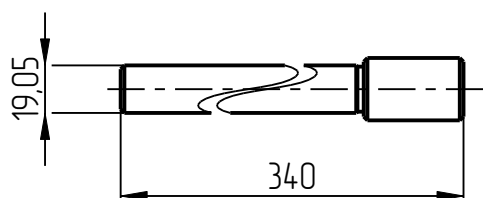
8. Направляющая пальца  
p-p-df-401-001-005



9. Палец поворачивный  
P-P-DF-P8-01



10. Палец поверочный  
P-P-DF-P8-02



11. Палец поверочный  
P-P-DF-P8-06