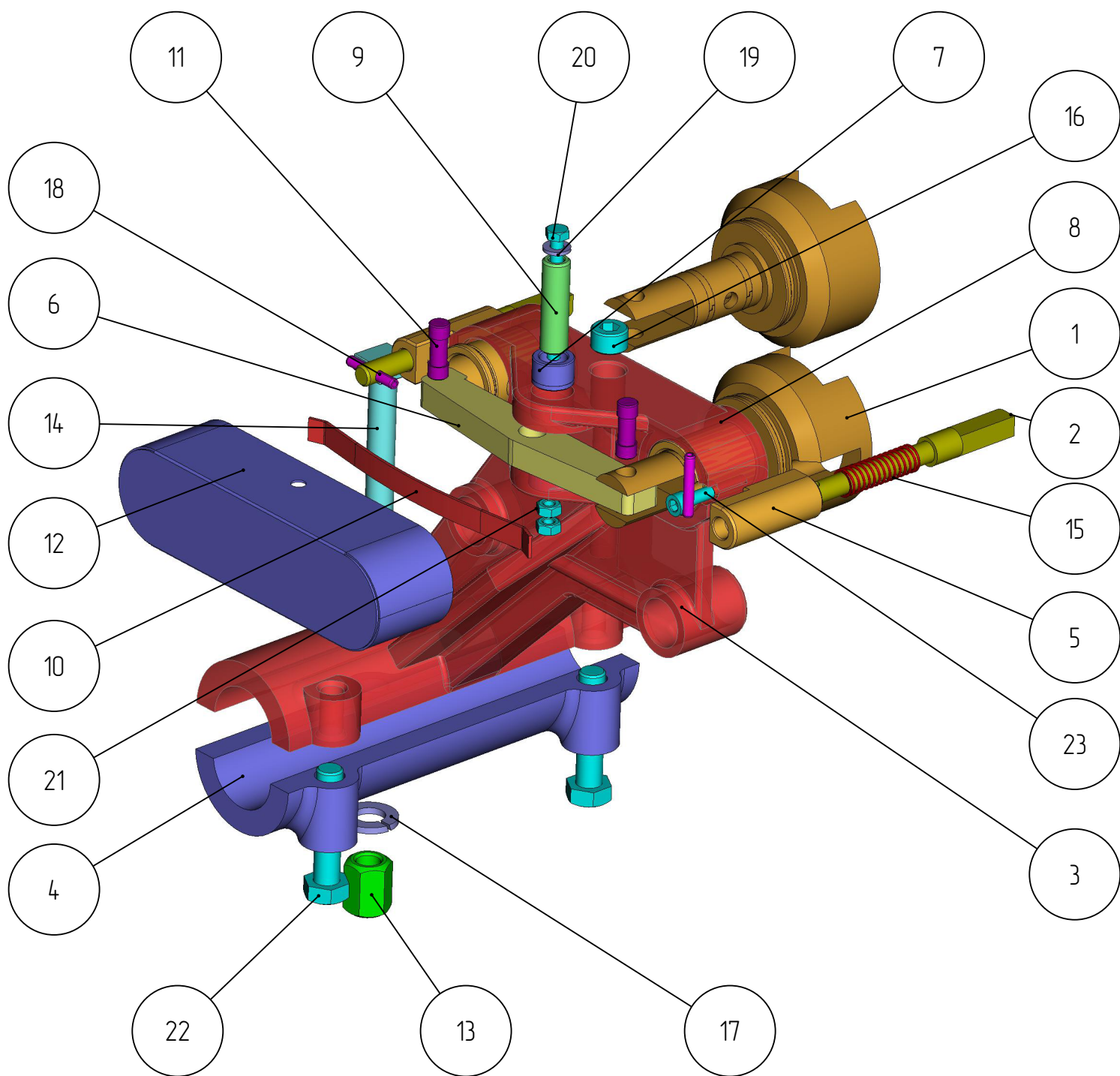


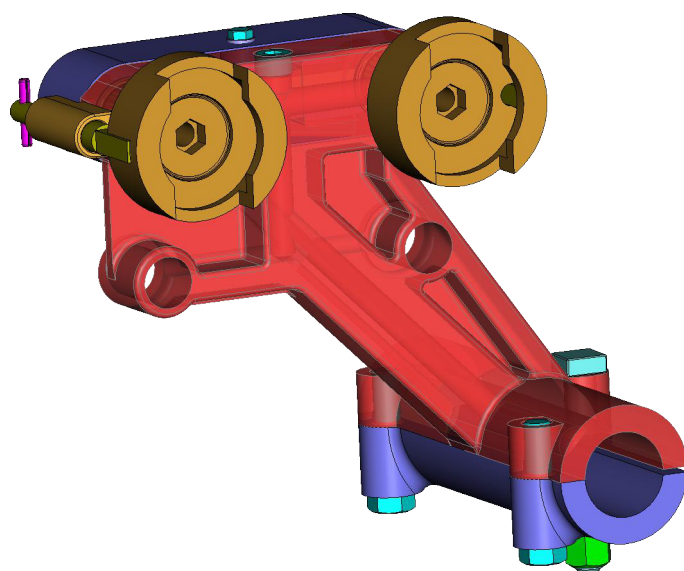
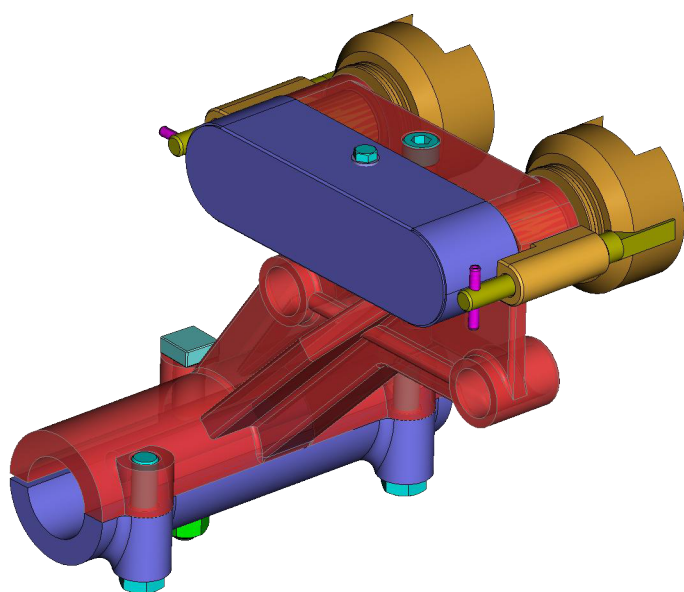
401

DPG-401-005
BAFFLE HOLDER 5"
(500-55-500-6-uf)

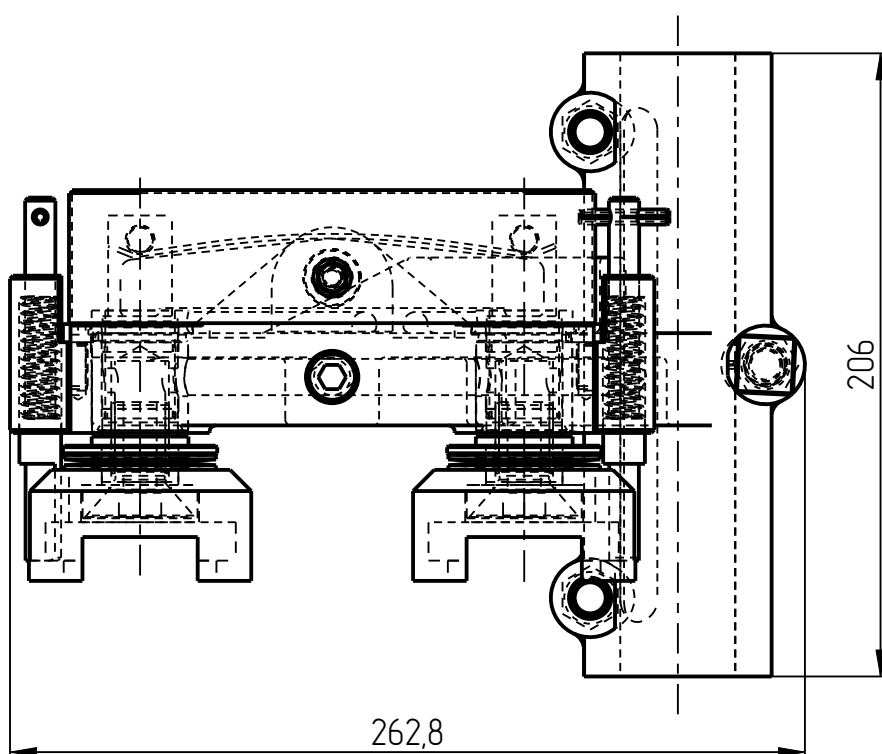
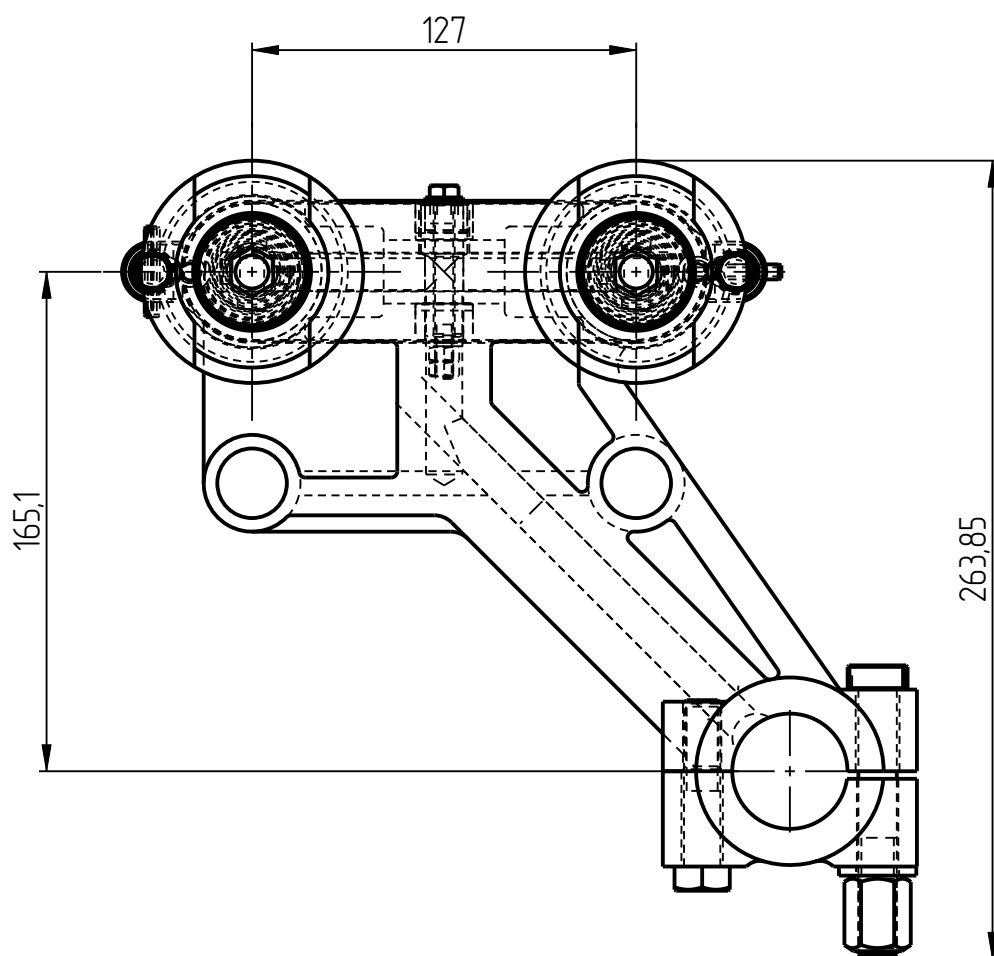
Baffle holder DPG-401-005



Baffle holder DPG-401-005

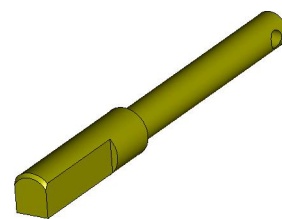
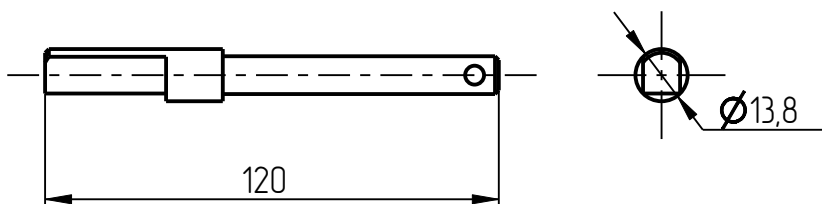


Baffle holder DPG-401-005

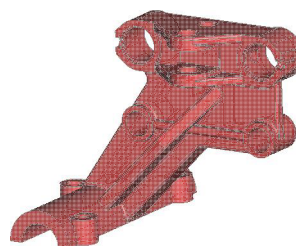
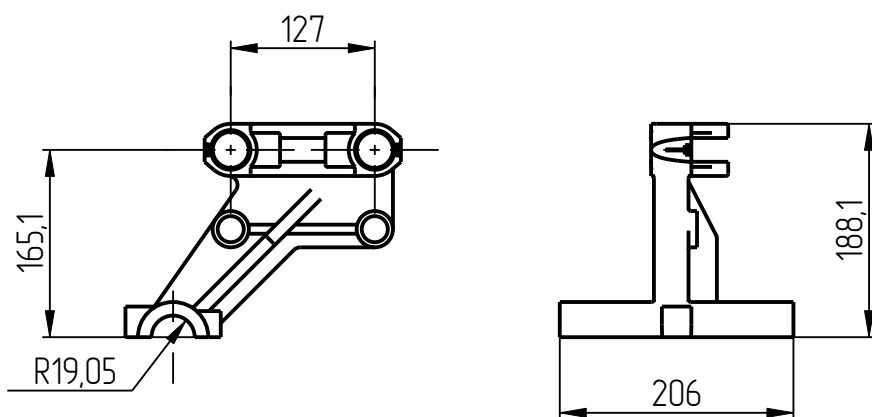


Baffle holder DPG-401-005 Specification

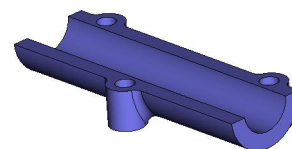
№ pos.	Code	Name	Qty
Assemblies			
1	DPG-401-002-003	Пресс-головка	2
Parts			
2	DPG-401-002-005	Lock	2
3	DPG-401-005-000	Main body	1
4	DPG-401-005-001	Holder	1
5	DPG-401-005-002	Holder	2
6	DPG-401-005-004	Equalizer	1
7	DPG-401-005-006	Bushing	2
8	DPG-401-005-007	Bushing	2
9	DPG-401-005-008	Pin	1
10	DPG-401-005-010	Leaf spring	1
11	DPG-401-005-011	Pin	2
12	DPG-401-005-012	Cap	
13	IS-5_001_000_003	Nut	1
14	IS-5_001_000_004	Screw	1
Unified parts			
15	KDG-P-13x62-401	Spring	2
Standard parts			
16	Threaded plug R3/8-19 DIN 906		1
17	Spring washer B14-A4 DIN 127		1
18	Spring pin \varnothing 5x30 DIN 1481		2
19	Washer 6 DIN 125		2
20	Screw M6x60 DIN 6921		1
21	Nut M6 DIN 934		2
22	Hexagon Flange Bolt M12x55 DIN 6921		2
23	Screw M6x16 DIN 912		2



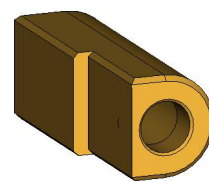
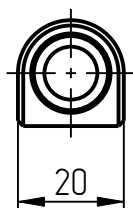
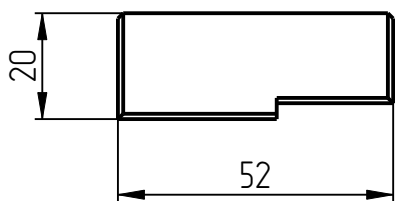
2. Position pin
DPG-401-002-005



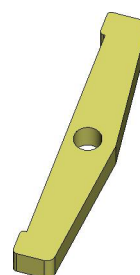
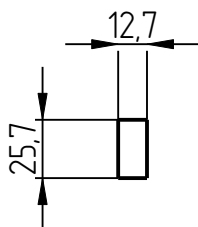
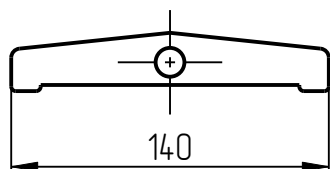
3. Main body
DPG-401-005-000



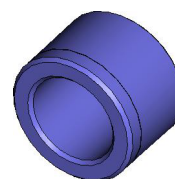
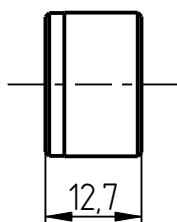
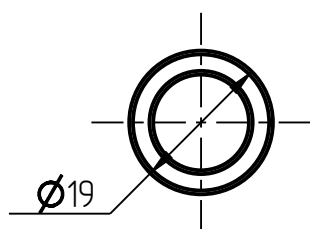
4. Holder
DPG-401-005-001



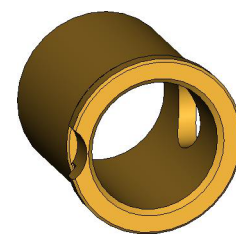
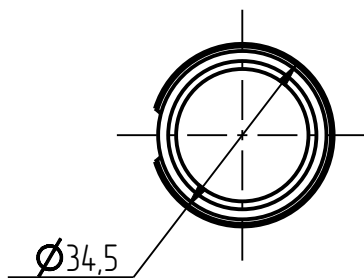
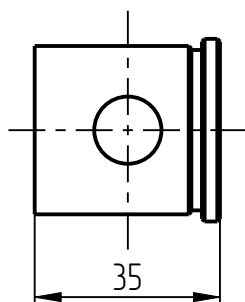
5. Holder
DPG-401-005-002



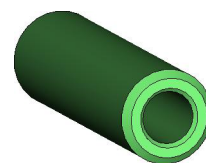
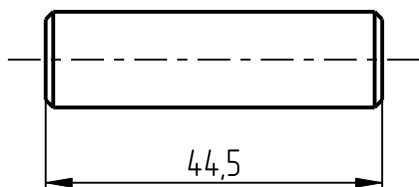
6. Equalizer
500-55-500-6_04



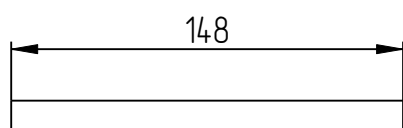
7. Bushing
DPG-401-005-006



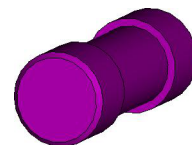
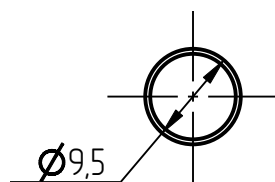
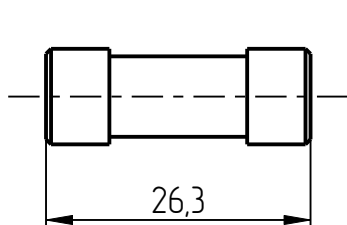
8. Bushing
DPG-401-005-007



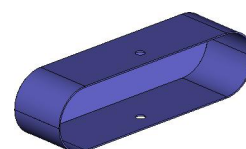
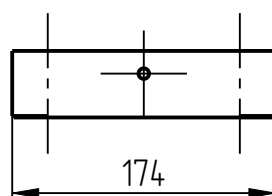
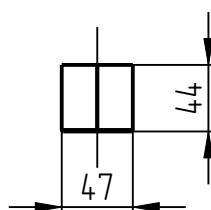
9. Pin
DPG-401-005-008



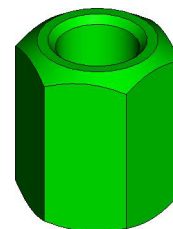
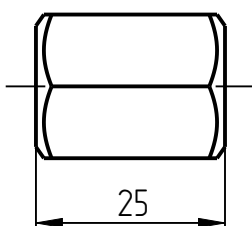
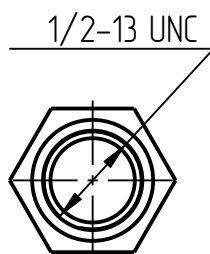
10. Leaf spring
DPG-401-005-010



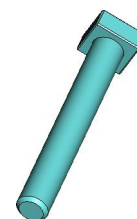
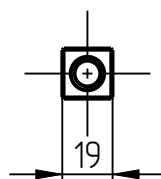
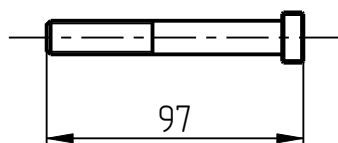
11. Pin
DPG-401-005-011



12. Cap
DPG-401-005-012



13. Nut
IS-5_001_000_003



14. Screw
IS-5_001_000_004