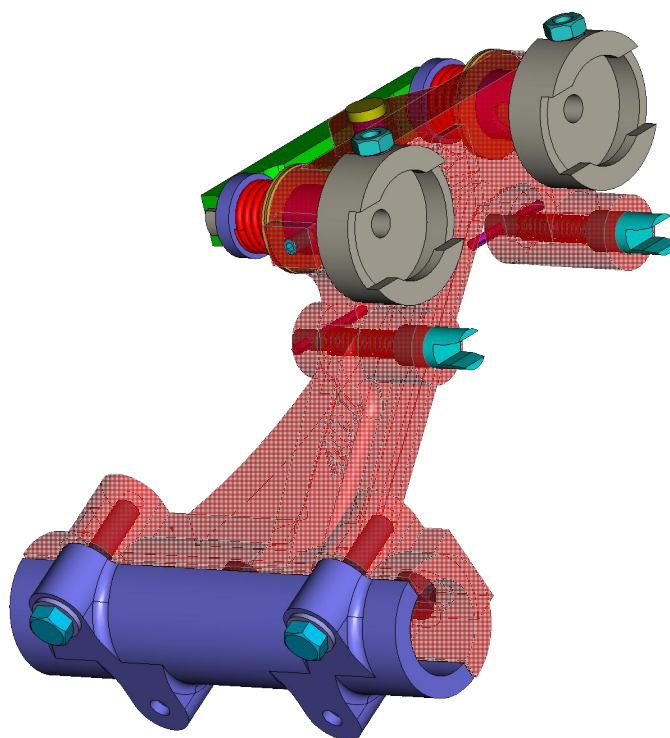
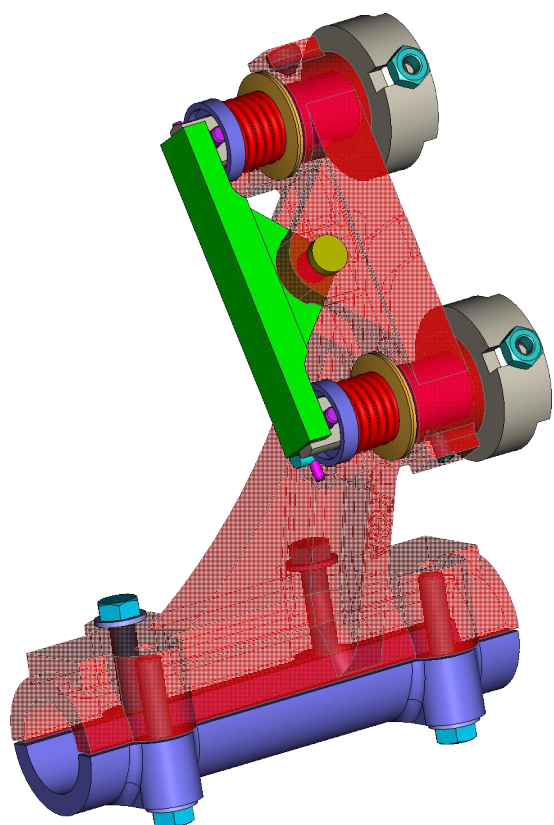


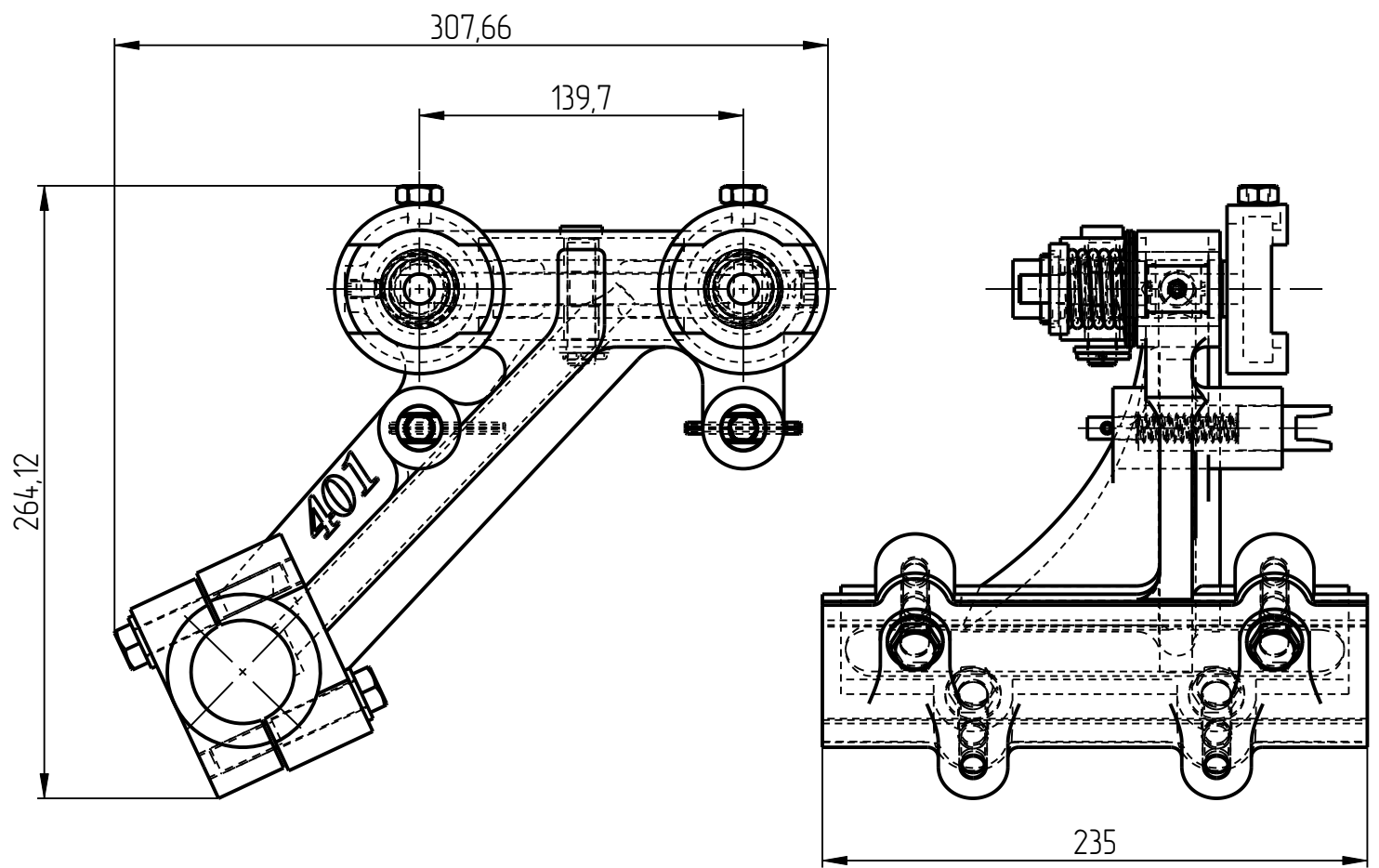
401

DPG-401-003
BAFFLE HOLDER 5-1/2"
(P-23-253-GR3-15)

Baffle holder
DPG-401-003

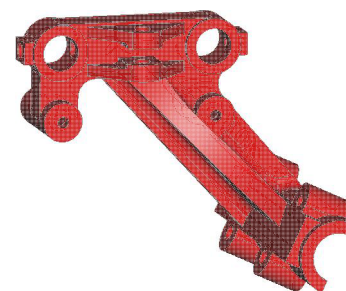
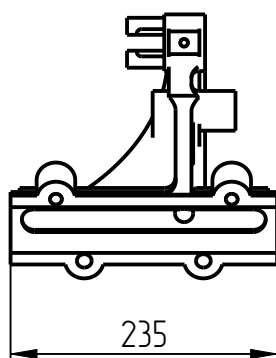
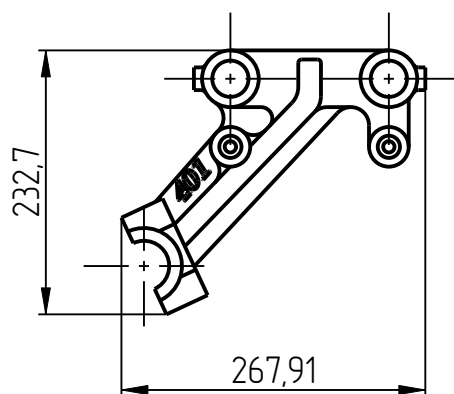


Baffle holder
DPG-401-003

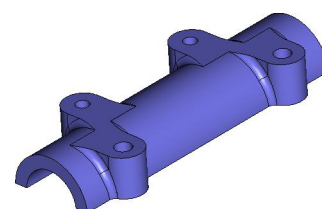
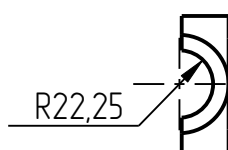
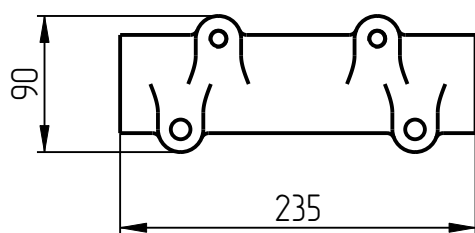


Baffle holder DPG-401-003 Specification

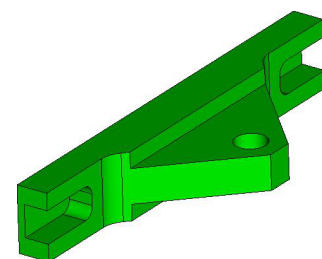
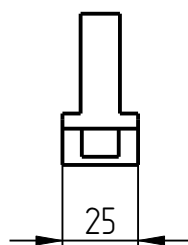
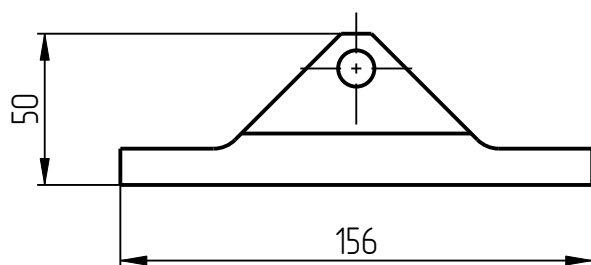
№ pos.	Code	Name	Qty
Parts			
1	DPG-401-003-001	Main body	1
2	DPG-401-003-002	Holder	1
3	DPG-401-003-003	Equalizer	1
4	DPG-401-003-004	Baffle lock ring	2
5	DPG-401-003-005	Spring	2
6	DPG-401-003-007	Position pin	2
7	DPG-401-003-008	Bushing	2
8	DPG-401-003-009	Bushing	2
9	DPG-401-003-010	Bolt	1
10	DPG-401-003-011	Thrust washer	2
Unified parts			
11	DPG-STD-401-01-03	Piston ring	4
12	KDG-P-13x62-401	Spring	2
Standard parts			
13	Con. spring washer 50x25x1,5x1,5		4
14	Split pin DIN 94-3x22		1
15	Nut M10 DIN 934		2
16	Spring pin \varnothing 5x50 DIN 1481		2
17	Hexagon Flange Bolt M12x70 DIN 6921		4
18	Hex socket set screw M16x1.5 DIN 913		1
19	Hex socket set screw M8x16 DIN 913		1
20	Washer 12 DIN 125		5
21	Pin 8Гx30 DIN 1481		2



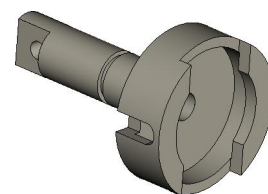
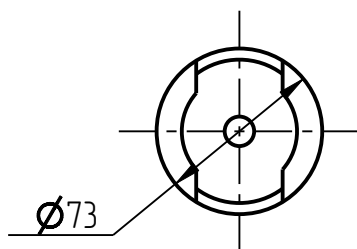
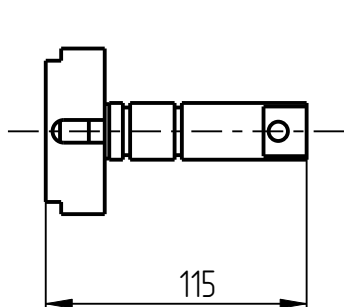
1. Main body
DPG-401-003-001



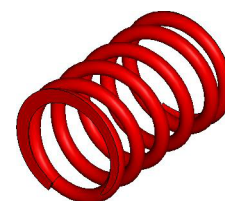
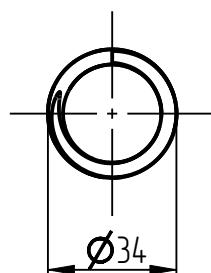
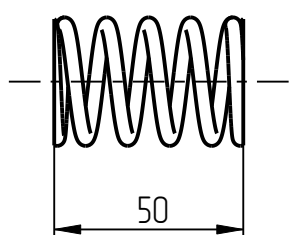
2. Holder
DPG-401-003-002



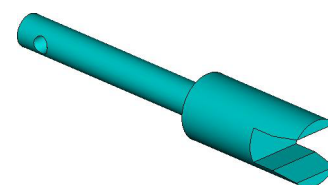
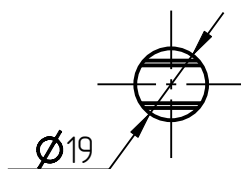
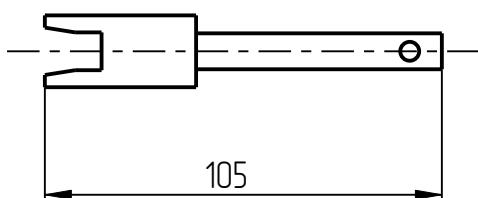
3. Equalizer
DPG-401-003-003



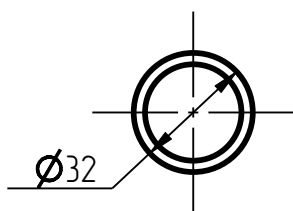
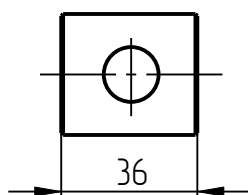
4. Baffle lock ring
DPG-401-003-004



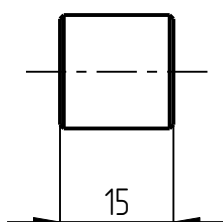
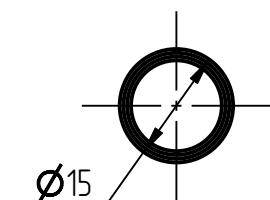
5. Spring
DPG-401-003-005



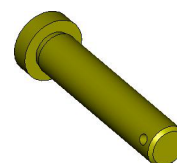
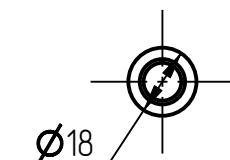
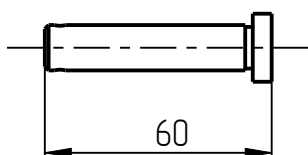
6. Position pin
DPG-401-003-007



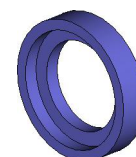
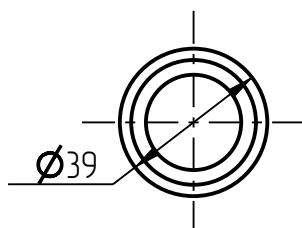
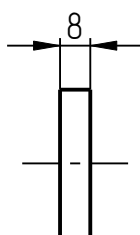
7. Bushing
DPG-401-003-008



8. Bushing
DPG-401-003-009



9. Bolt
DPG-401-003-010



10. Thrust washer
DPG-401-003-011