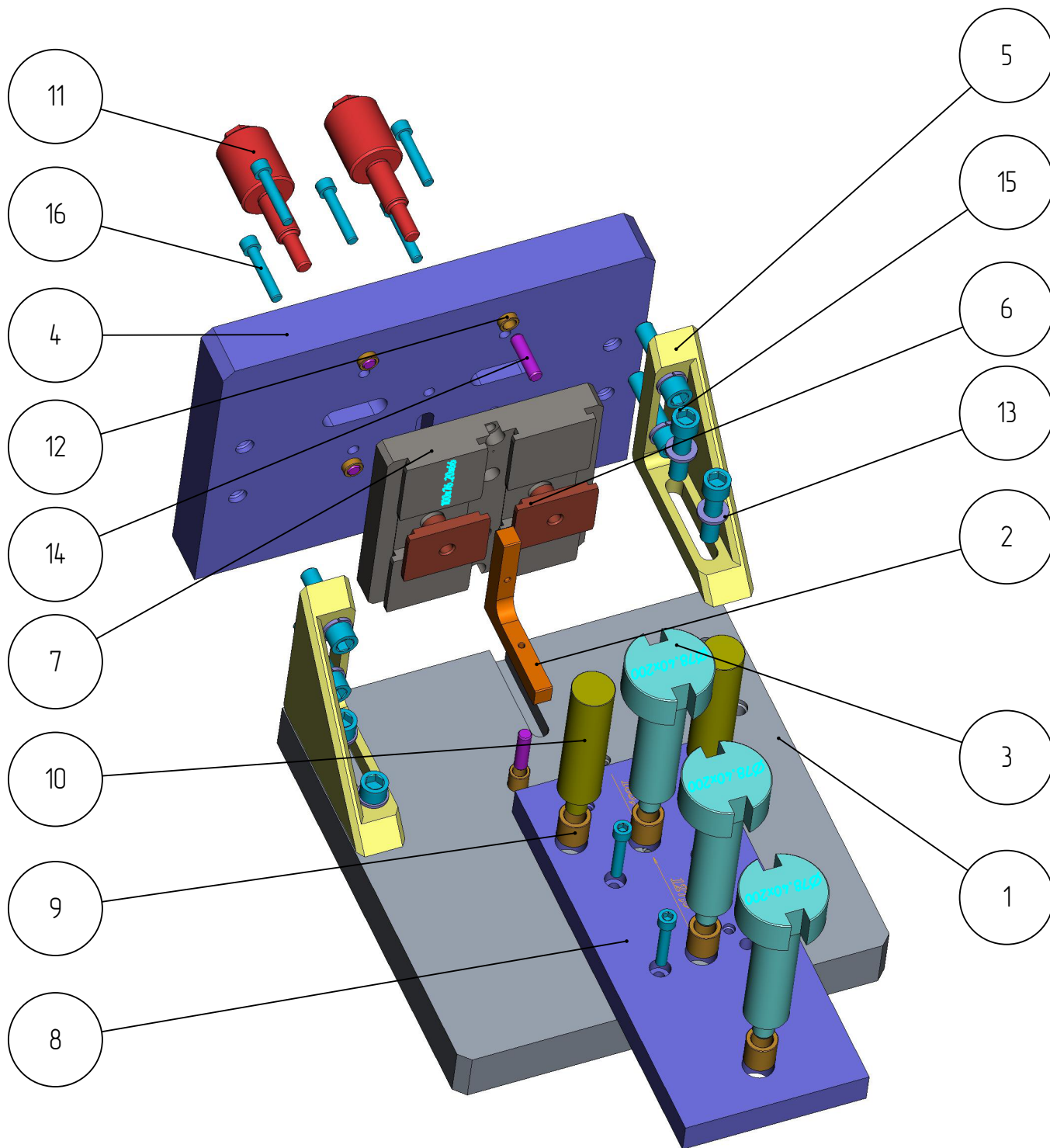


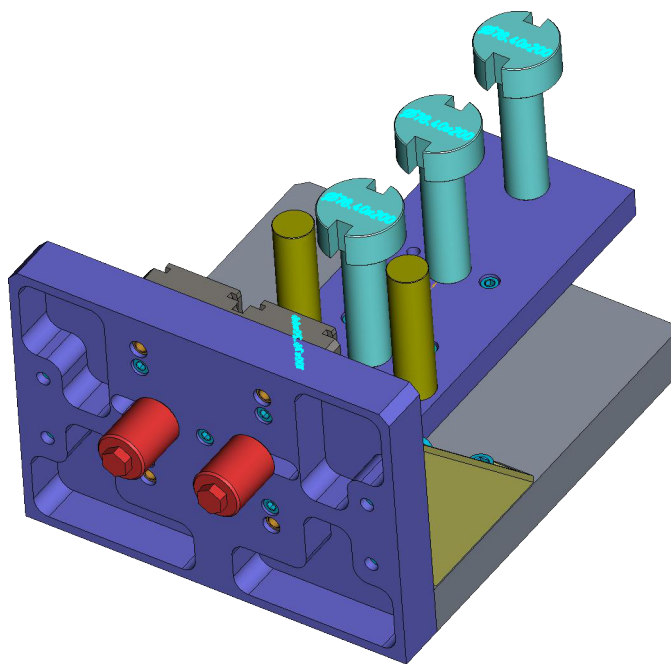
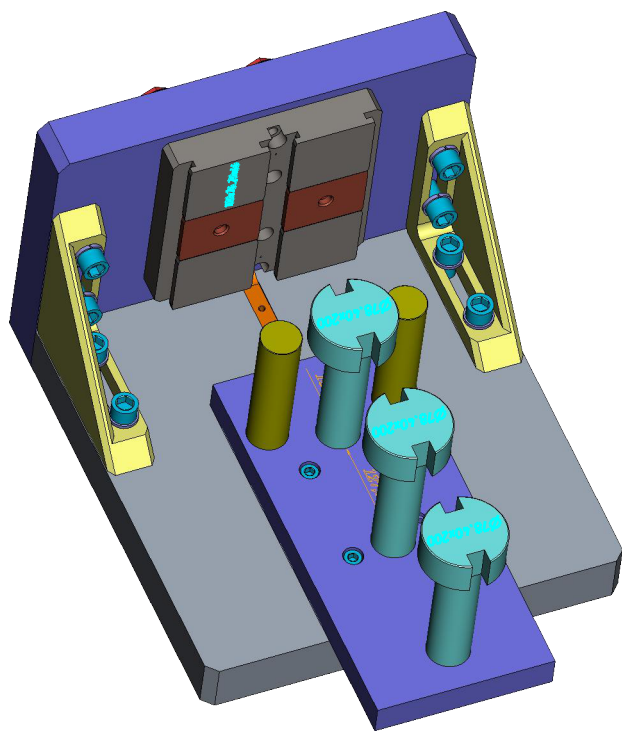
401

DGK-KP-401-005
СТЕНД ПОВЕРОЧНЫЙ
3-х КАПЕЛЬНЫХ ДЕРЖАТЕЛЕЙ
ГОРЛОВЫХ КОЛЕЦ 5"

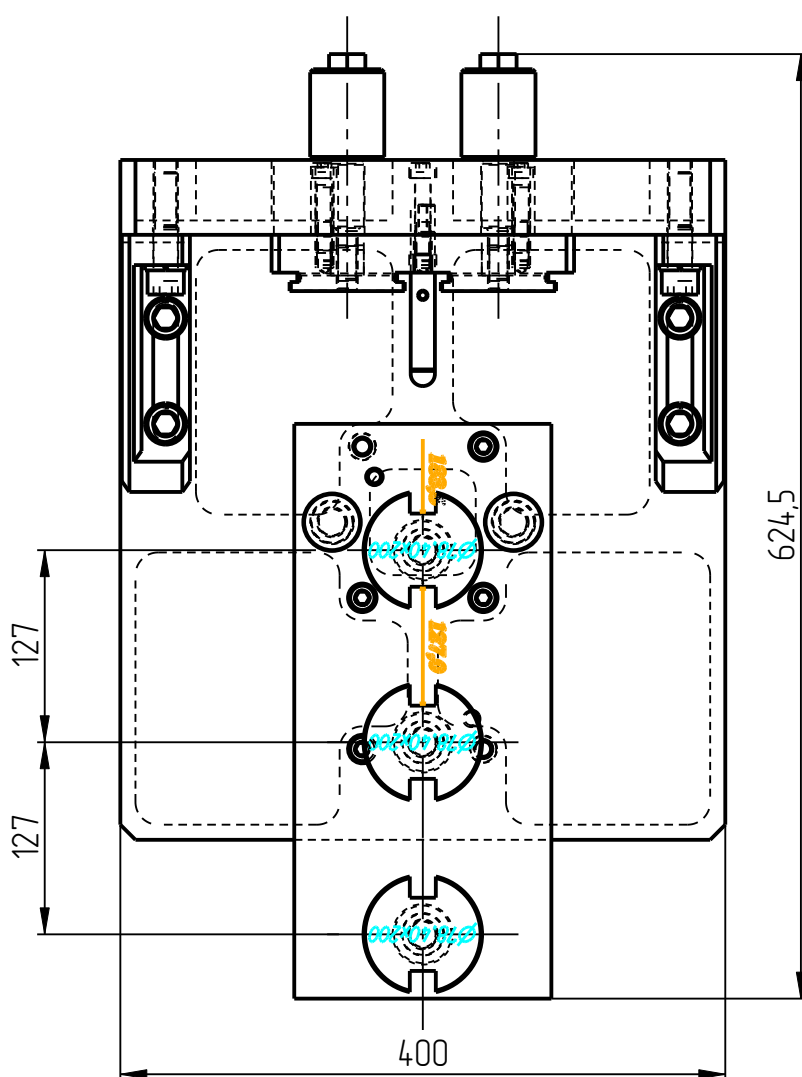
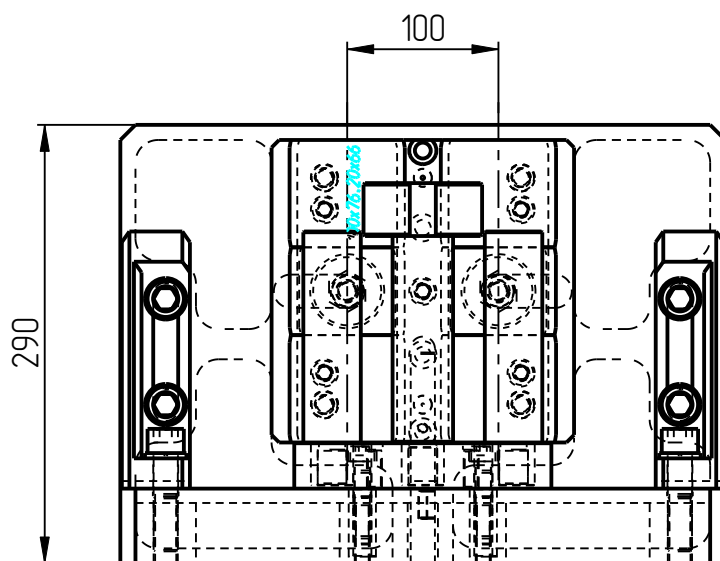
Контрольное приспособление dgk-кр-401-004



Контрольное приспособление dgk-кр-401-004

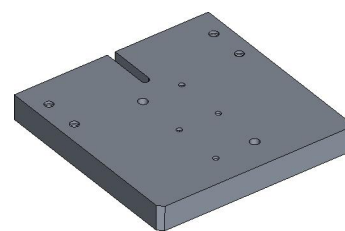
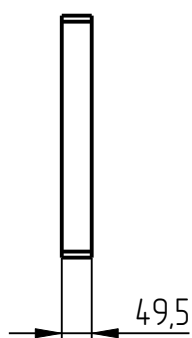
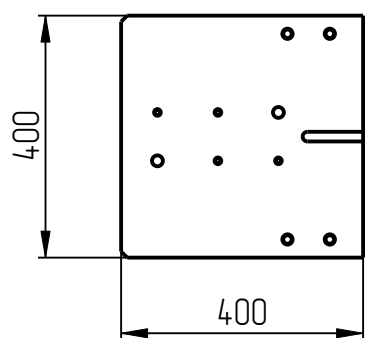


Контрольное приспособление dgk-kr-401-004

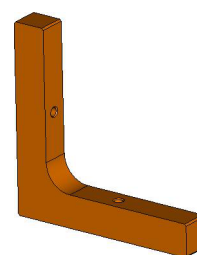
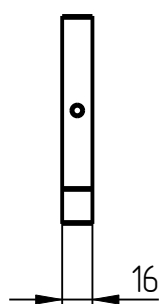
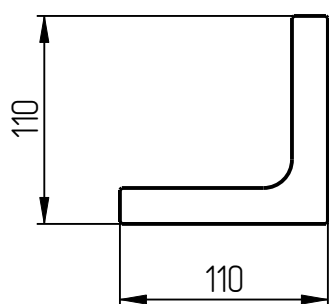


Стенд поверочный DGK-КР-401-005 Спецификация

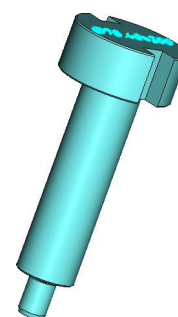
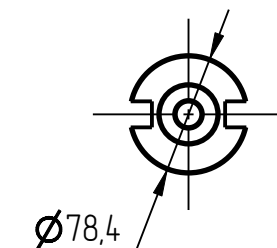
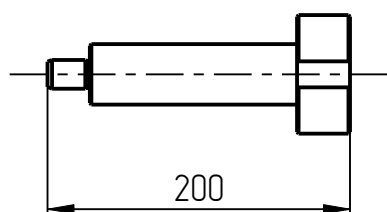
№ поз.	Шифр	Наименование	Кол-во
Детали			
1	DGK-КР-1-1	Основание	1
2	DGK-КР-1-10	Уголок	1
3	DGK-КР-1-12_78_4X200X17_2	Калибр ДГК	3
4	DGK-КР-1-2	Стенка	1
5	DGK-КР-1-3	Угол	2
6	DGK-КР-1-4-3-1	Фиксатор	2
7	DGK-КР-1-4-6	Направляющая	1
8	DGK-КР-1-5-7	Измерительная плита	1
9	DGK-КР-1-6	Втулка	5
10	DGK-КР-1-7_L140	Опора	2
11	DGK-КР-1-8	Винт	2
12	DGK-КР-1-9	Втулка	6
Стандартные изделия			
13	Шайба пружинная В16-А4 DIN 127		8
14	Штифт 12Гх45 DIN 6325		6
15	Винт М16х65 DIN 912		8
16	Винт М10х55 DIN 912		9



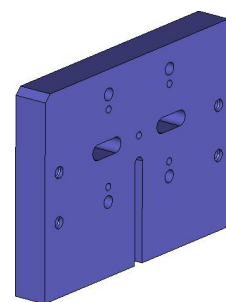
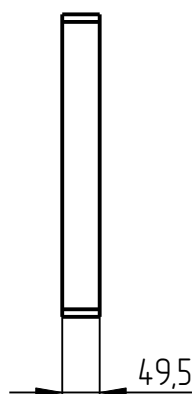
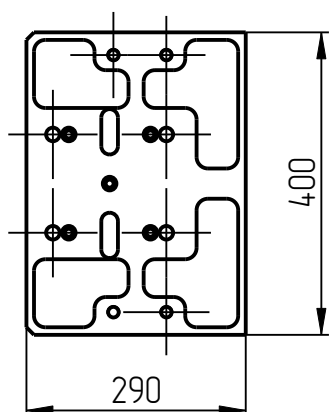
1. Основание
DGK-KP-1-1



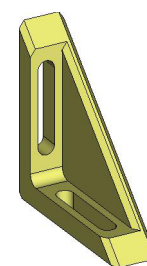
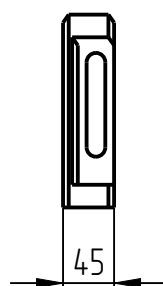
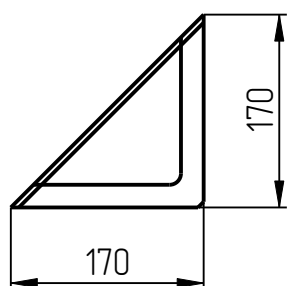
2. Уголок
DGK-KP-1-10



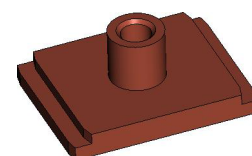
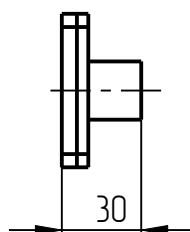
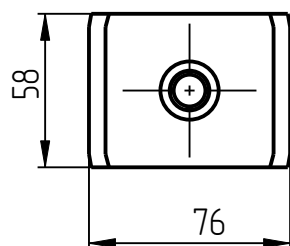
3. Калибр ДГК
DGK-KP-1-12_78_4X200X17_2



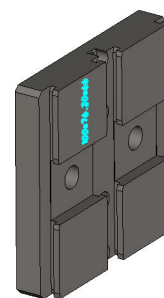
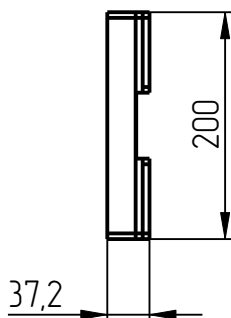
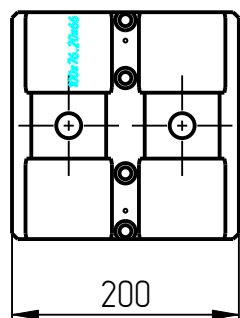
4. Стенка
DGK-KP-1-2



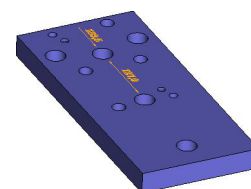
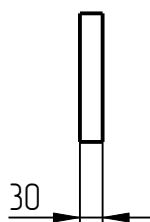
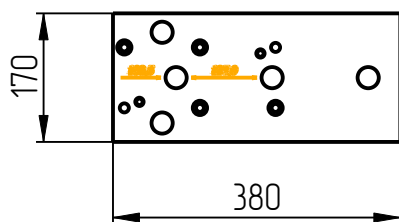
5. Узел
DGK-KP-1-3



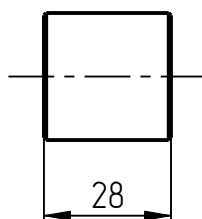
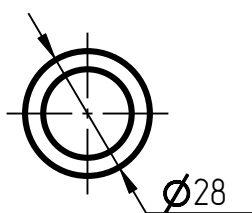
6. Фиксатор
DGK-KP-1-4-3-1



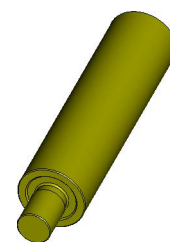
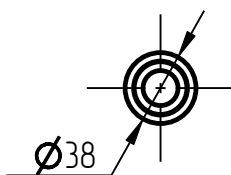
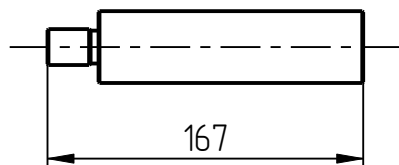
7. Направляющая
DGK-KP-1-4-6



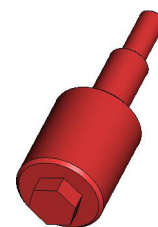
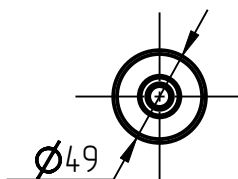
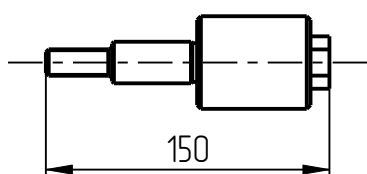
8. Измерительная плита
DGK-KP-1-5-7



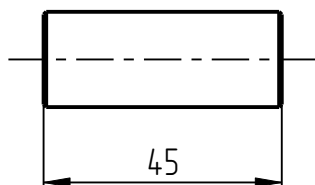
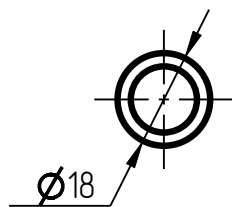
9. Втулка
DGK-KP-1-6



10. Опора
DGK-KP-1-7_L140



11. Втулка
DGK-KP-1-8



12. Втулка
DGK-KP-1-9