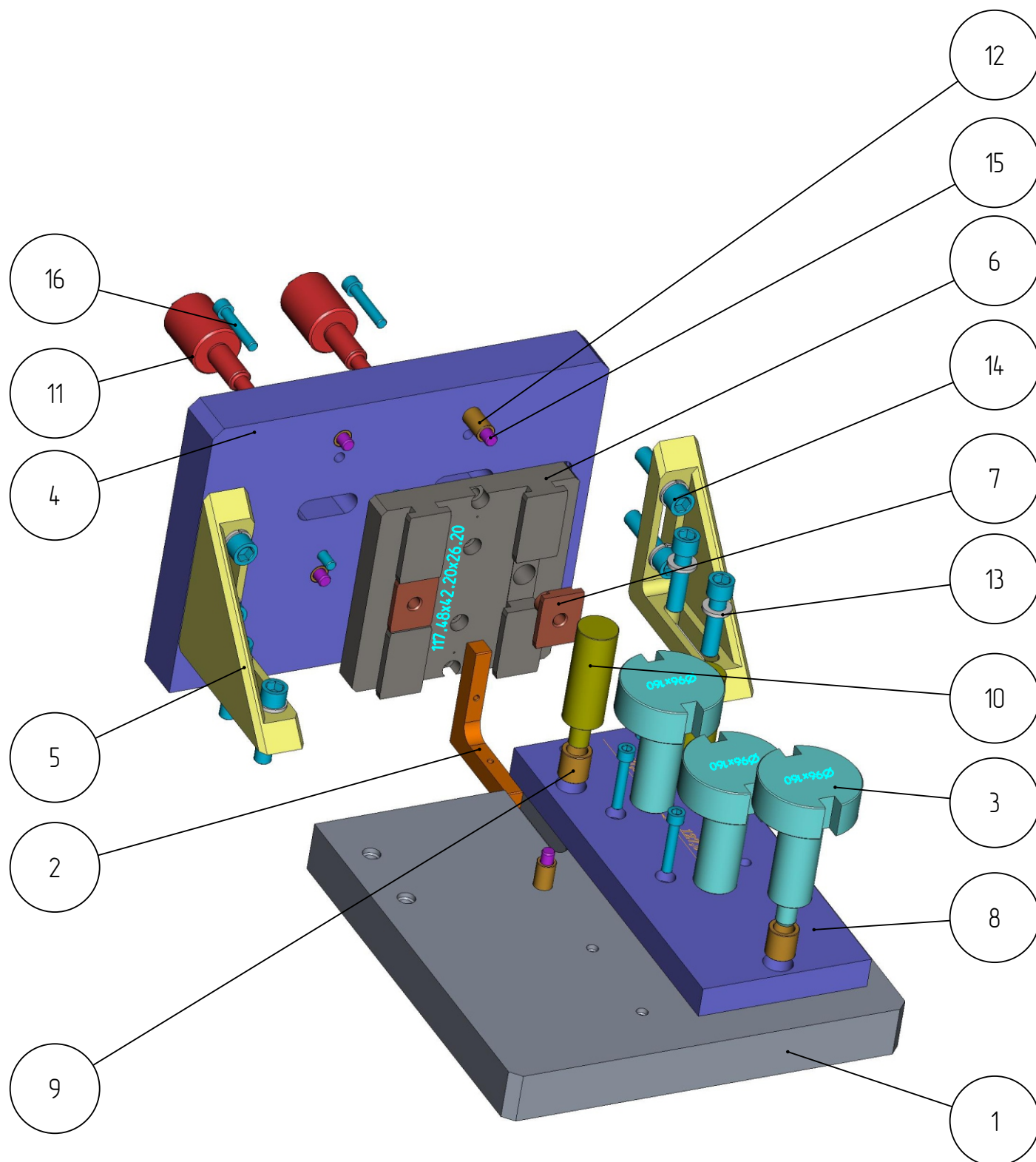


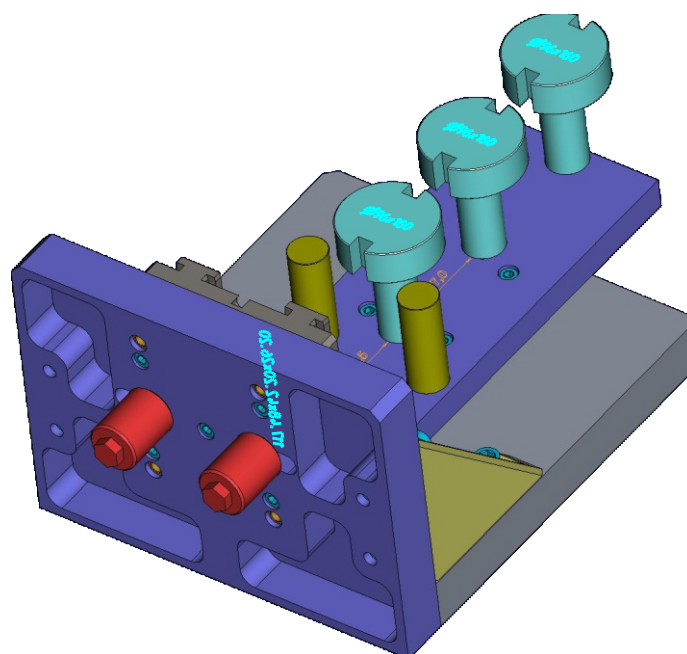
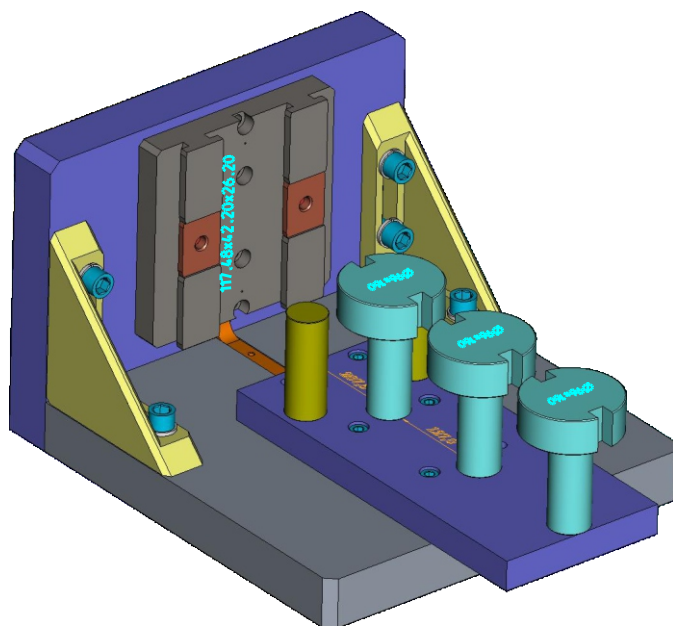
401

DGK-KP-401-004
СТЕНД ПОВЕРОЧНЫЙ
3-х КАПЕЛЬНЫХ ДЕРЖАТЕЛЕЙ
ГОРЛОВЫХ КОЛЕЦ 5"

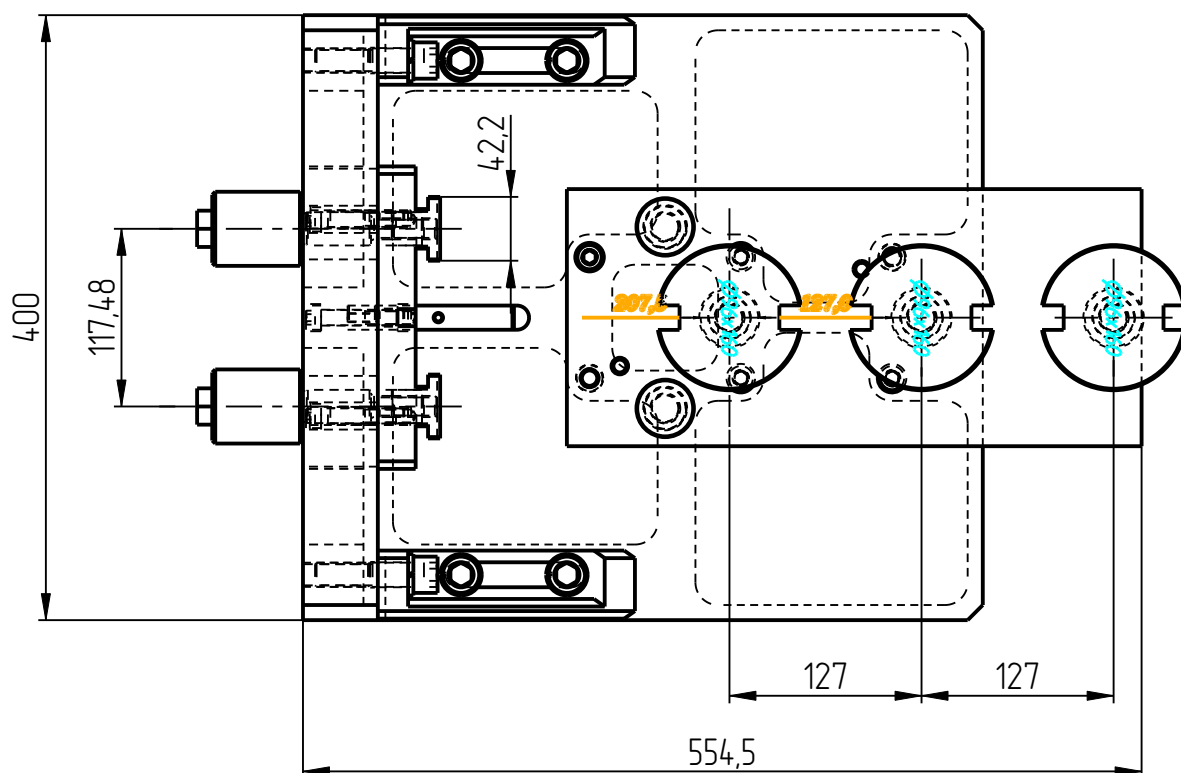
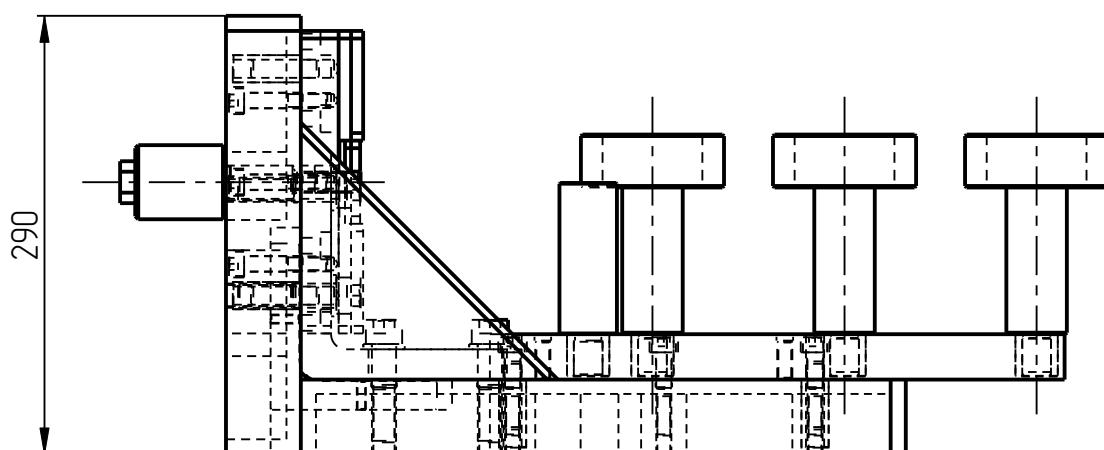
Контрольное приспособление DGK-KP-401-004



Контрольное приспособление DGK-KP-401-004

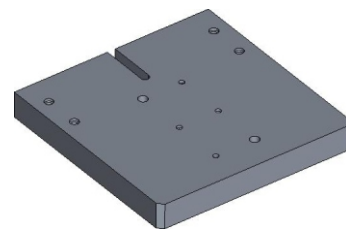
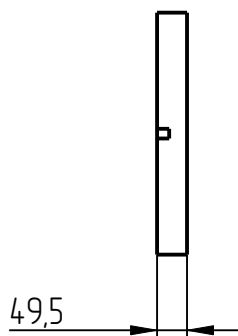
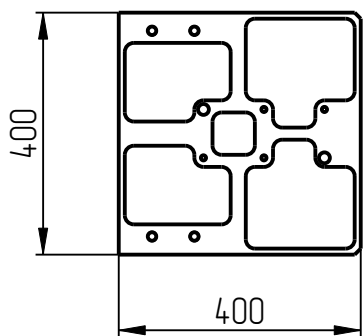


Контрольное приспособление DGK-KP-401-004

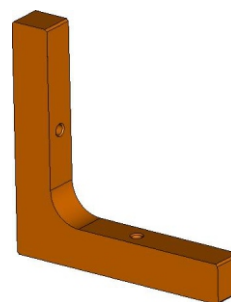
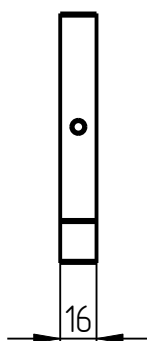
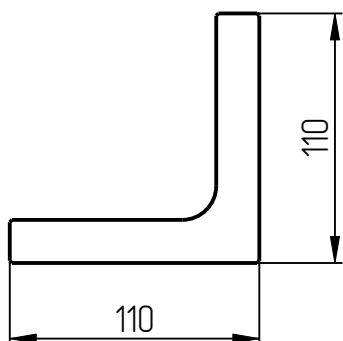


Стенд поверочный DGK-КР-401-004 Спецификация

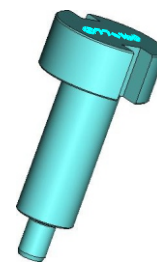
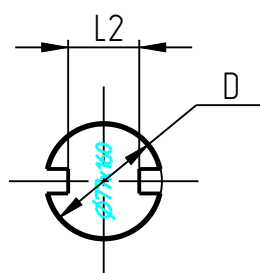
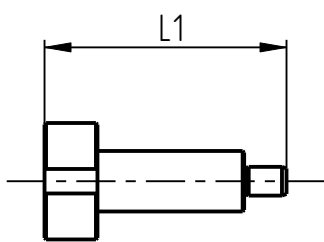
| № поз. | Шифр | Наименование | Кол-во |
|----------------------------|--------------------------------|---------------------|--------|
| Детали | | | |
| 1 | DGK-КР-1-1 | Основание | 1 |
| 2 | DGK-КР-1-10 | Уголок | 1 |
| 3 | DGK-КР-1-12_96X160 | Калибр ДГК | 3 |
| 4 | DGK-КР-1-2 | Стенка | 1 |
| 5 | DGK-КР-1-3 | Угол | 2 |
| 6 | DGK-КР-1-4-2 | Направляющая | 1 |
| 7 | DGK-КР-1-4-2-1 | Фиксатор | 2 |
| 8 | DGK-КР-1-5-2 | Измерительная плита | 1 |
| 9 | DGK-КР-1-6 | Втулка | 5 |
| 10 | DGK-КР-1-7_L100 | Опора | 2 |
| 11 | DGK-КР-1-8 | Винт | 2 |
| 12 | DGK-КР-1-9 | Втулка | 6 |
| Стандартные изделия | | | |
| 13 | Шайба пружинная В16-А4 DIN 127 | | 8 |
| 14 | Винт М16х65 DIN 912 | | 8 |
| 15 | Штифт 12Гх45 DIN 6325 | | 6 |
| 16 | Винт М10х55 DIN 912 | | 9 |



1. Основание
DGK-KP-1-1

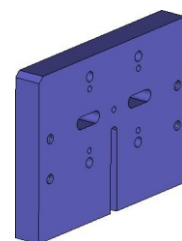
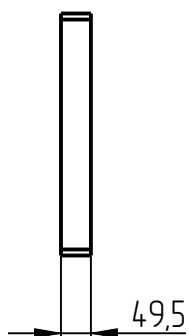
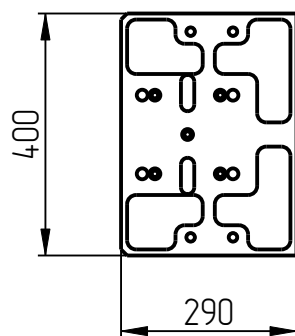


2. Узлоқ
DGK-KP-1-10

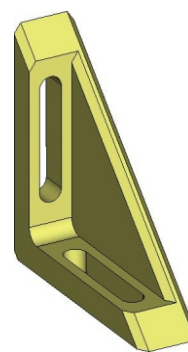
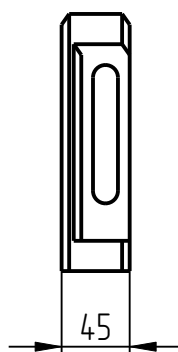
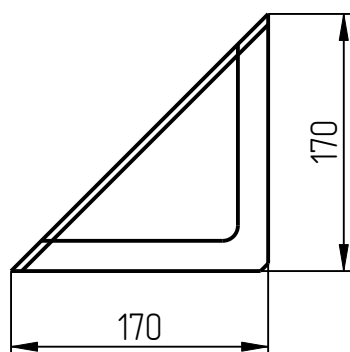


3. Калибр ДГК
DGK-KP-1-12

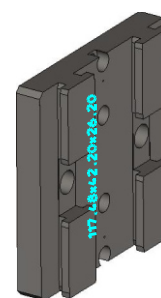
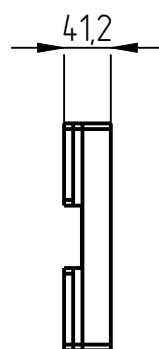
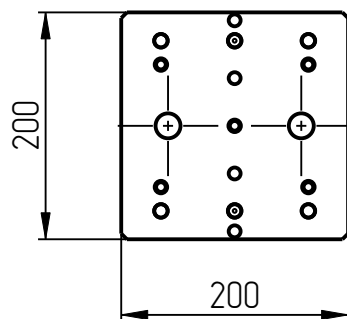
| Обозначение | $\varnothing D$, мм | L1, мм | L2, мм |
|----------------------|----------------------|--------|--------|
| DGK-KP-1-12_68_2X160 | 68,2 | 160 | 38,2 |
| DGK-KP-1-12_77X160 | 77 | 160 | 47 |
| DGK-KP-1-12_78_4X160 | 78,4 | 160 | 48,4 |
| DGK-KP-1-12_78_4X200 | 78,4 | 200 | 48,4 |
| DGK-KP-1-12_78_9X160 | 78,9 | 160 | 48,9 |
| DGK-KP-1-12_87X160 | 87 | 160 | 57 |
| DGK-KP-1-12_95_2X160 | 95,2 | 160 | 65,2 |
| DGK-KP-1-12_96X160 | 96 | 160 | 66 |



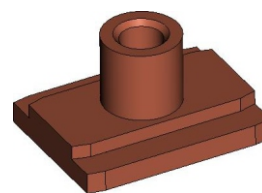
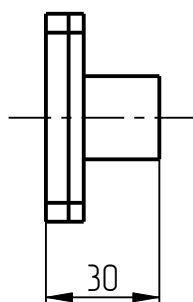
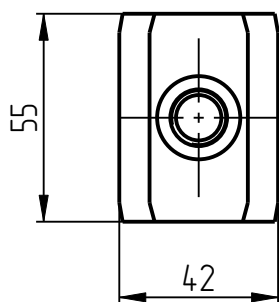
4. Стенка
DGK-КР-1-2



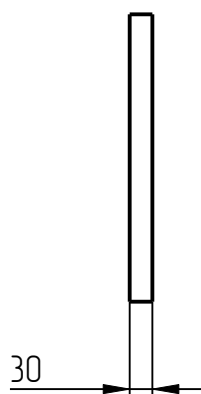
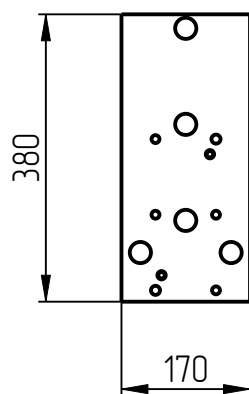
5. Узел
DGK-КР-1-3



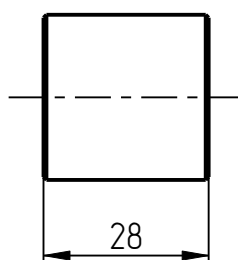
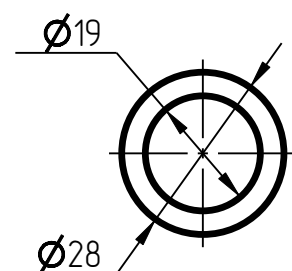
6. Направляющая
DGK-КР-1-4-2



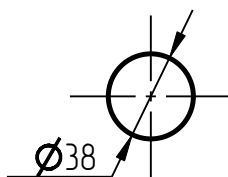
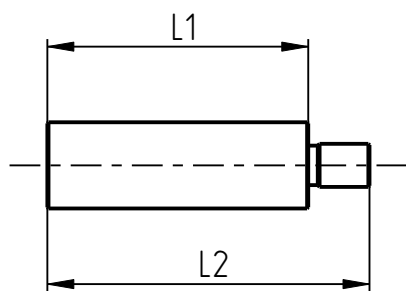
7. Фиксатор
DGK-КР-1-4-2-1



8. Измерительная плита
DGK-КР-1-5-2

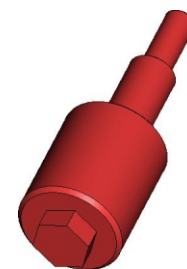
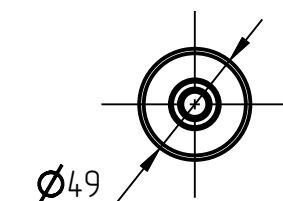
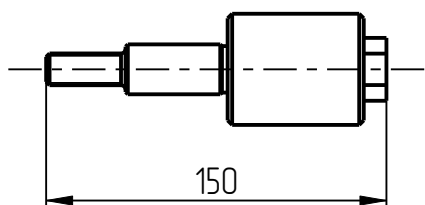


9. Втулка
DGK-КР-1-6

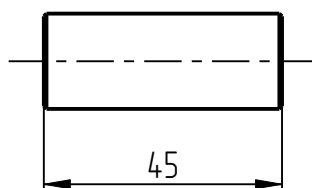
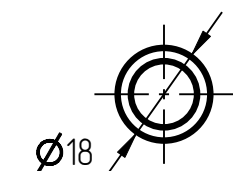


10. Опора
DGK-KP-1-7

| Обозначение | L1, мм | L2, мм |
|----------------------|--------|--------|
| DGK-KP-1-7_L140 L140 | 140 | 167 |
| DGK-KP-1-7_L120 L120 | 120 | 147 |
| DGK-KP-1-7_L100 L100 | 100 | 127 |



11. Винт
DGK-KP-1-8



12. Втулка
DGK-KP-1-9